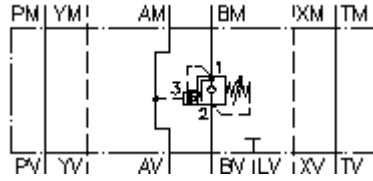


**counterbalance valve, CETOP 7
(sandwich plate) in B
SBLZ-16A-B..CA/..**



IMAV-Hydraulik GmbH
Breite Strasse 10
D-40670 Meerbusch (Osterath)
Phone +49 (0)2159 - 9188.0
Fax +49 (0)2159 - 4242
E-mail: info@imav.com
Internet: <http://www.imav.com>

 **Symbol:**

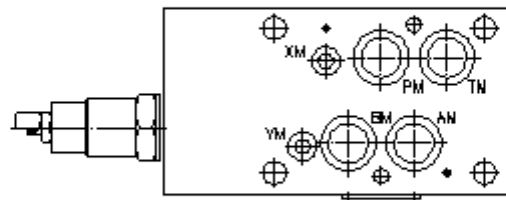
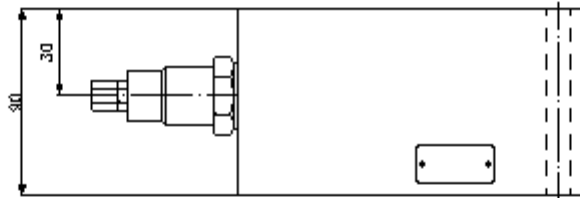
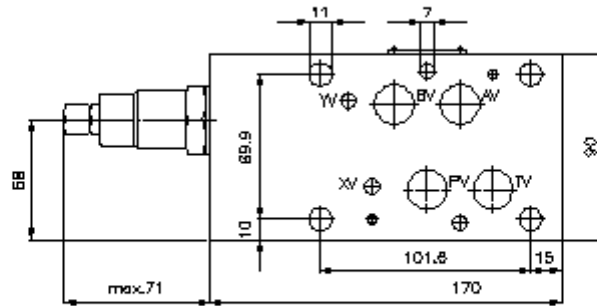


Nom. pressure:
250 bar

Nominal flow:
120 l/min.

IZ-530-501-00

(Subject to change!)



**counterbalance valve, CETOP 7
(sandwich plate) in B
SBLZ-16A-B..CA/..**



IMAV-Hydraulik GmbH
Breite Strasse 10
D-40670 Meerbusch (Osterath)
Phone +49 (0)2159 - 9188.0
Fax +49 (0)2159 - 4242
E-mail: info@imav.com
Internet: <http://www.imav.com>

IZ-530-501-00

(Subject to change!)

Ordering example:

SBLZ - 16A - B 01 C A / 50
| | | | | | |
A B C D E F G

Model code:

- | | |
|--|--|
| A design
counter balance valve
with mounting interface DIN 24340 form A
sandwichplate design | E adjustment
C = cap |
| B size and material
16A = aluminum (F37) | F check valve free flow crack pressure
A = 1.40 bar |
| C function mode
B = in B acting (return flow) | G pressure range (CBV1 + CBV2)
30 = 62.1 - 210 bar
50 = 186.2 - 350 bar |
| D counter balance valve
01 = CBV1-12.-.. (pilot ratio 4:1)
02 = CBV2-12.-.. (pilot ratio 10:1) | |

Technical Data:

- note:** left turn (counter clockwise) = increasing pressure
right turn (clockwise) = reducing pressure
- nominal pressure:** 250 bar (A)
higher pressure on request
- nominal flow:** 120 l/min
- weight:** 3.7 kg
- counter balance valve:** CBV1-12.-.. resp. CBV2-12.-.. see datasheet no. MC-410-121-00
- included:** 4 pcs. O-Ring 22.22 x 2.62
2 pcs. O-Ring 9.19 x 2.62