

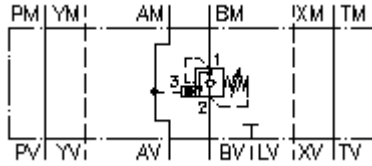
**counterbalance valve, CETOP 7  
(sandwich plate) in B  
SBLZ-16.-BP.C/..**



IMAV-Hydraulik GmbH  
Breite Strasse 10  
D-40670 Meerbusch (Osterath)  
Phone +49 (0)2159 - 9188.0  
Fax +49 (0)2159 - 4242  
E-mail: [info@imav.com](mailto:info@imav.com)  
Internet: <http://www.imav.com>



**Symbol:**

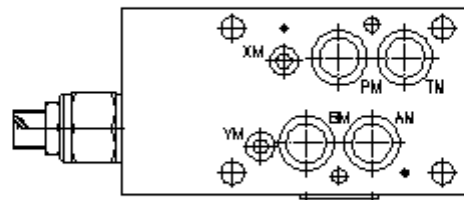
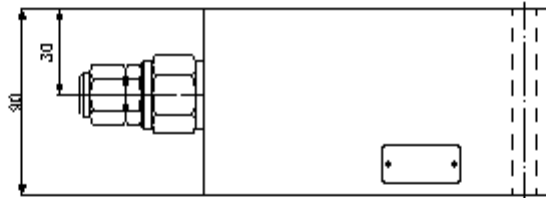
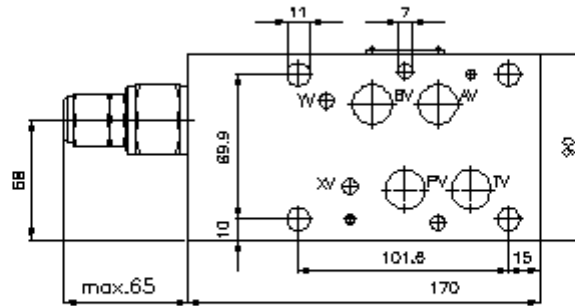


**Nom. pressure:**  
275 bar

**Nominal flow:**  
135 l/min.

**IZ-530-551-00**

(Subject to change!)



**counterbalance valve, CETOP 7  
(sandwich plate) in B  
SBLZ-16.-BP.C/..**



IMAV-Hydraulik GmbH  
Breite Strasse 10  
D-40670 Meerbusch (Osterath)  
Phone +49 (0)2159 - 9188.0  
Fax +49 (0)2159 - 4242  
E-mail: [info@imav.com](mailto:info@imav.com)  
Internet: <http://www.imav.com>

**IZ-530-551-00**

(Subject to change!)

**Ordering example:**

SBLZ - 16A - B PA C / 30  
| | | | |  
**A** **B** **C** **D** **E** **F**

**Model code:**

- A design**  
counter balance valve  
with mounting interface DIN 24340 form A  
sandwichplate design
- B size and material**  
16A = aluminum (F37)  
16S = steel (9SMnPb28K resp. GGG-40)
- C function mode**  
B = in B acting
- D counter balance valve (pilot ratio 4:1)**  
PA = CBPA-12.-.. (without seals at the  
piston)  
PS = CBPS-12.-.. (with seals at the piston)

- E adjustment**  
C = cap  
S = screw adjustment
- F pressure range (CBPA, CBPS)**  
15 = 3.4 - 105 bar  
30 = 20.7 - 210 bar  
40 = 41.4 - 276 bar

**Technical Data:**

**nominal pressure:** 250 bar (A)  
275 bar (S)

**nominal flow:** 135 l/min

**weight:** 3.7 kg

**counter balance valve:** CBP.-12.-.. see datasheet no. CC-410-121-00

**included:** 4 pcs. O-Ring 22.22 x 2.62  
2 pcs. O-Ring 9.19 x 2.62