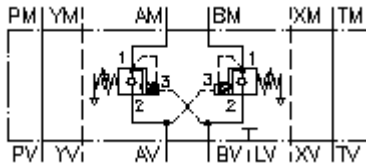


**counterbalance valve, CETOP 7
(sandwich plate)in A+B(vent.spring)
SBLZ-16.-A+BPGC/..**



Symbol:



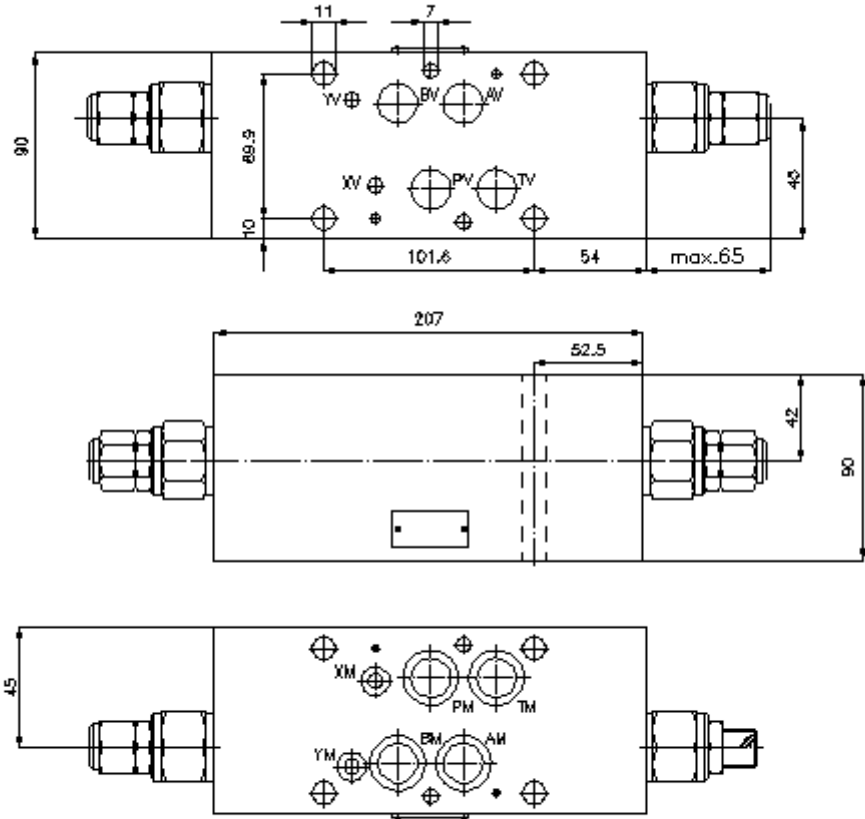
Nom. pressure:
275 bar

Nominal flow:
135 l/min.



IMAV-Hydraulik GmbH
Breite Strasse 10
D-40670 Meerbusch (Osterath)
Phone +49 (0)2159 - 9188.0
Fax +49 (0)2159 - 4242
E-mail: info@imav.com
Internet: <http://www.imav.com>

IZ-530-555-00
(Subject to change!)



**counterbalance valve, CETOP 7
(sandwich plate)in A+B(vent.spring)
SBLZ-16.-A+BPGC/..**



IMAV-Hydraulik GmbH
Breite Strasse 10
D-40670 Meerbusch (Osterath)
Phone +49 (0)2159 - 9188.0
Fax +49 (0)2159 - 4242
E-mail: info@imav.com
Internet: <http://www.imav.com>

IZ-530-555-00

(Subject to change!)

Ordering example:

SBLZ - 16A - A+B PG C / 30
| | | | |
A B C D E F

Model code:

- | | |
|--|---|
| <p>A design
counter balance valve
with mounting interface DIN 24340 form A
sandwichplate design</p> <p>B size and material
16A = aluminum (F37)
16S = steel (9SMnPb28K resp. GGG-40)</p> <p>C function mode
A+B = in A and B acting</p> | <p>D counter balance valve (pilot ratio 4:1)
PG = CBPG-12.-.. (vented spring)</p> <p>E adjustment
C = cap
S = screw adjustment</p> <p>F pressure range (CBPG)
15 = 3.4 - 105 bar
30 = 20.7 - 210 bar
40 = 41.4 - 276 bar</p> |
|--|---|

Technical Data:

nominal pressure: 250 bar (A)
275 bar (S)

nominal flow: 135 l/min

weight: 4.8 kg

counter balance valve: CBPG-12.-.. see datasheet no. [CC-420-121-00](#)

included: 4 pcs. O-Ring 22.22 x 2.62
2 pcs. O-Ring 9.19 x 2.62