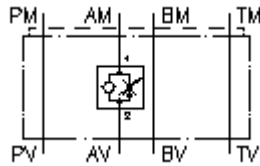


**2 way flow reg. valve CETOP 3  
(sandwich plate) flow-reg. in A  
SR2Z-06.-AR1.**



**Symbol:**

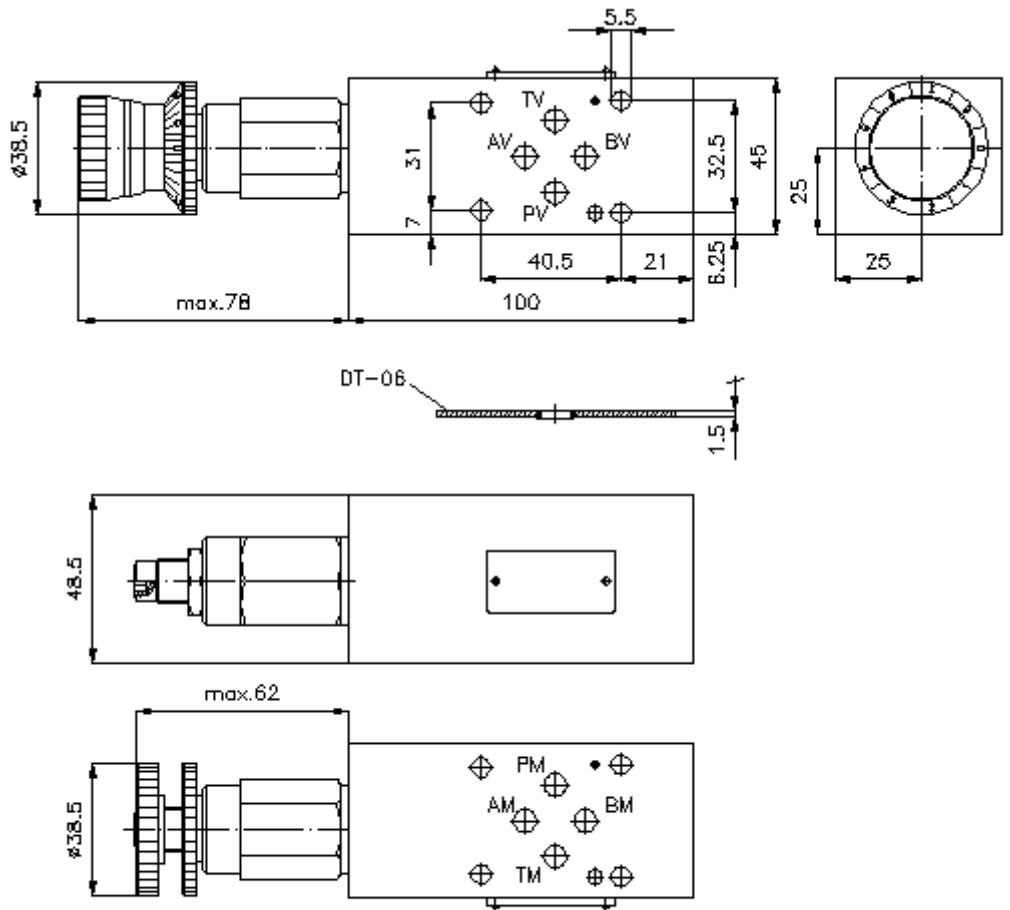
**Nom. pressure:**  
350 bar



IMAV-Hydraulik GmbH  
Breite Strasse 10  
D-40670 Meerbusch (Osterath)  
Phone +49 (0)2159 - 9188.0  
Fax +49 (0)2159 - 4242  
E-mail: [info@imav.com](mailto:info@imav.com)  
Internet: <http://www.imav.com>

**IZ-650-200-00**

(Subject to change!)



## 2 way flow reg. valve CETOP 3 (sandwich plate) flow-reg. in A SR2Z-06.-AR1.



IMAV-Hydraulik GmbH  
Breite Strasse 10  
D-40670 Meerbusch (Osterath)  
Phone +49 (0)2159 - 9188.0  
Fax +49 (0)2159 - 4242  
E-mail: [info@imav.com](mailto:info@imav.com)  
Internet: <http://www.imav.com>

**IZ-650-200-00**

(Subject to change!)

### Ordering example:

SR2Z - 06A - A R1 K  
|        |        |        |        |  
**A**    **B**    **C**    **D**    **E**

### Model code:

- |  |  |
|--|--|
| <p><b>A</b> <b>design</b><br/>flow regulator valve<br/>with free reverse flow<br/>with mounting interface DIN 24340 form A<br/>sandwichplate design</p> <p><b>B</b> <b>size and material</b><br/>06A = aluminum (F37)<br/>06S = steel (9SMnPb28K resp. GGG-40)</p> | <p><b>C</b> <b>function mode</b><br/>A = in A acting</p> <p><b>D</b> <b>flow regulator valve</b><br/>R1 = FAR1-10.-... see data sheet no.: <u>MF-200-101-00</u></p> <p><b>E</b> <b>adjustment</b><br/>S = screw adjustment<br/>K = handknob<br/>H = calibrated handknob with locknut</p> |
|--|--|

### Technical Data:

- note:** Supply and return regulation will change by turning the valve around the longitudinal axis.
- nominal pressure:** 250 bar (A)  
350 bar (S)
- weight:** 0.5 / 1.1 kg (A/S)
- flow regulator valve:** FAR1-10.-.-0-.. see datasheet no. MF-200-101-00
- included:** DT-06 = sealing plate with vulcanized O-ring (Viton FPM)