

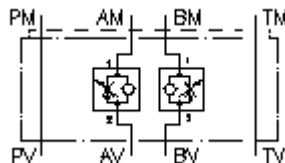
**2 way flow reg. valve CETOP 3
(sandwich plate) flow-reg. in A+B
SR2Z-06.-A+BR1.**



IMAV-Hydraulik GmbH
Breite Strasse 10
D-40670 Meerbusch (Osterath)
Phone +49 (0)2159 - 9188.0
Fax +49 (0)2159 - 4242
E-mail: info@imav.com
Internet: <http://www.imav.com>

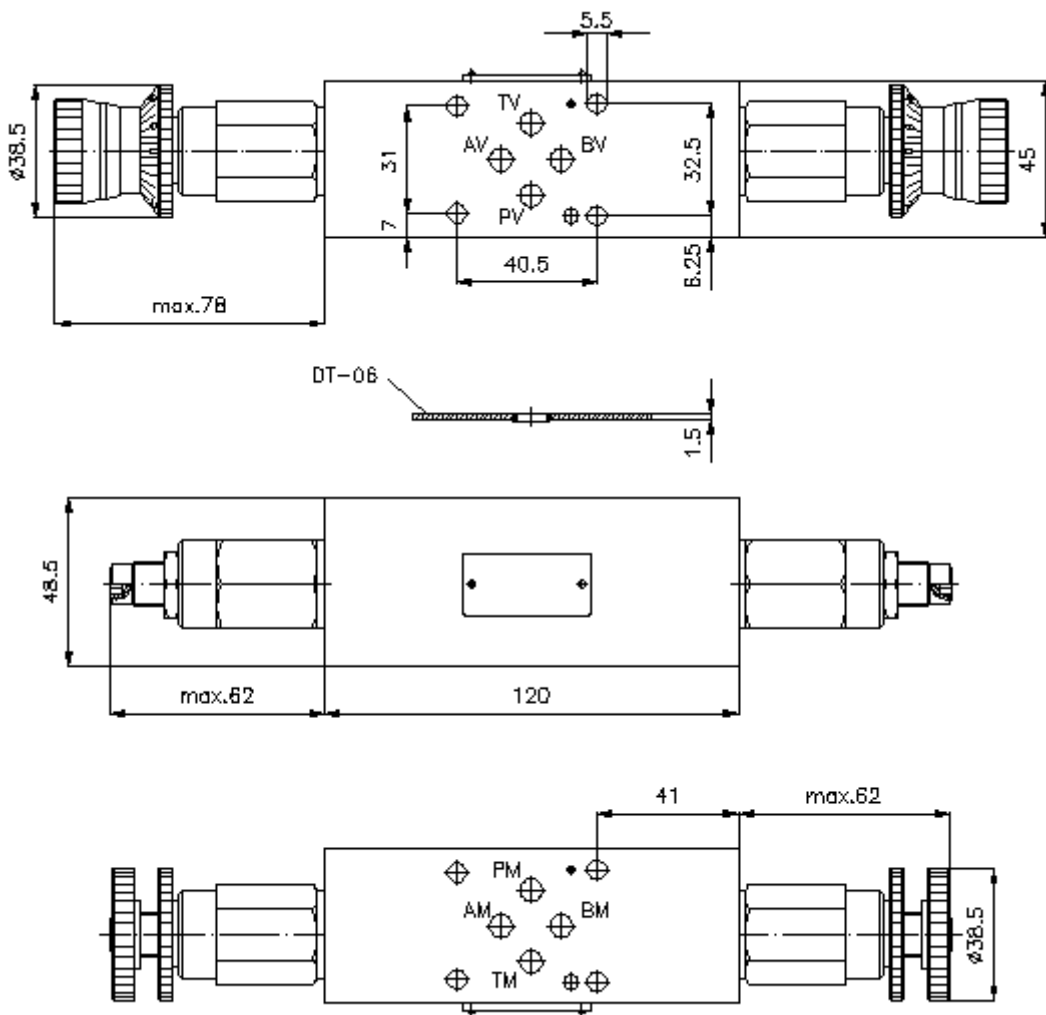
 **Symbol:**

Nom. pressure:
350 bar



IZ-650-202-00

(Subject to change!)



**2 way flow reg. valve CETOP 3
(sandwich plate) flow-reg. in A+B
SR2Z-06.-A+BR1.**



IMAV-Hydraulik GmbH
Breite Strasse 10
D-40670 Meerbusch (Osterath)
Phone +49 (0)2159 - 9188.0
Fax +49 (0)2159 - 4242
E-mail: info@imav.com
Internet: <http://www.imav.com>

IZ-650-202-00

(Subject to change!)

Ordering example:

SR2Z - 06A - A+B R1 K
| | | | |
A **B** **C** **D** **E**

Model code:

- | | |
|--|---|
| <p>A design
flow regulator valve
with free reverse flow
with mounting interface DIN 24340 form A
sandwichplate design</p> <p>B size and material
06A = aluminum (F37)
06S = steel (9SMnPb28K resp. GGG-40)</p> | <p>C function mode
A+B = in A and B acting</p> <p>D flow regulator valve
R1 = FAR1-10.-... see data sheet no.: <u>MF-200-101-00</u></p> <p>E adjustment
S = screw adjustment
K = handknob
H = calibrated handknob with locknut</p> |
|--|---|

Technical Data:

- | | |
|------------------------------|---|
| note: | Supply and return regulation will change by turning the valve around the longitudinal axis. |
| nominal pressure: | 250 bar (A)
350 bar (S) |
| weight: | 0.5 / 1.1 kg (A/S) |
| flow regulator valve: | FAR1-10.-.-0-.. see datasheet no. <u>MF-200-101-00</u> |
| included: | DT-06 = sealing plate with vulcanized O-ring (Viton FPM) |