

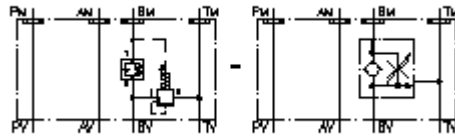
**3 way flow reg. valve CETOP 3
(sandwich plate) in B to T
SR3Z-06A-BVL.**



IMAV-Hydraulik GmbH
Breite Strasse 10
D-40670 Meerbusch (Osterath)
Phone +49 (0)2159 - 9188.0
Fax +49 (0)2159 - 4242
E-mail: info@imav.com
Internet: <http://www.imav.com>

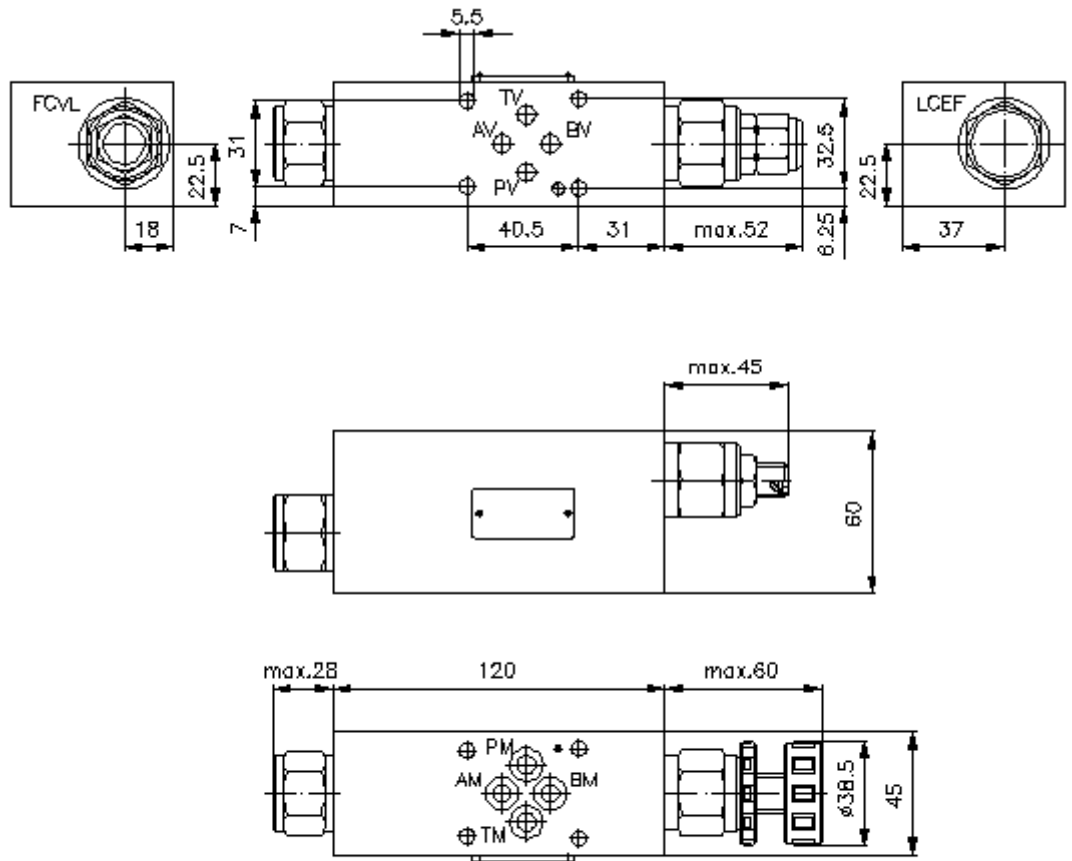
Symbol:

Nom. pressure:
250 bar



IZ-670-250-00

(Subject to change!)



**3 way flow reg. valve CETOP 3
(sandwich plate) in B to T
SR3Z-06A-BVL.**



IMAV-Hydraulik GmbH
Breite Strasse 10
D-40670 Meerbusch (Osterath)
Phone +49 (0)2159 - 9188.0
Fax +49 (0)2159 - 4242
E-mail: info@imav.com
Internet: <http://www.imav.com>

IZ-670-250-00

(Subject to change!)

Ordering example:

SR3Z - 06A - B VL C
| | | | |
A **B** **C** **D** **E**

Model code:

- | | |
|---|--|
| <p>A design flow regulator valve with mounting interface DIN 24340 form A sandwichplate design</p> <p>B size and material 06A = aluminum (F37)</p> <p>C function mode B = in B acting (supply flow)</p> | <p>D throttle valve VL = FCVL-10.-..</p> <p>E adjustment S = screw adjustment C = cap K = handknob</p> |
|---|--|

Technical Data:

nominal pressure: 250 bar
weight: 1. 1 kg
logic element valve: LCEF-10.-A-F-0-100 see datasheet no. [CD-210-101-00](#)
throttle check valve: FCVL-10.-.. see datasheet no. [CF-100-101-00](#)
seals: included:
4 pcs. O-ring 9.25 x 1.78