

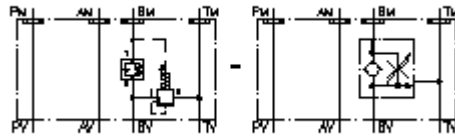
**3 way flow reg. valve CETOP 5
(sandwich plate) in B to T
SR3Z-10A-BVL.**



IMAV-Hydraulik GmbH
Breite Strasse 10
D-40670 Meerbusch (Osterath)
Phone +49 (0)2159 - 9188.0
Fax +49 (0)2159 - 4242
E-mail: info@imav.com
Internet: <http://www.imav.com>

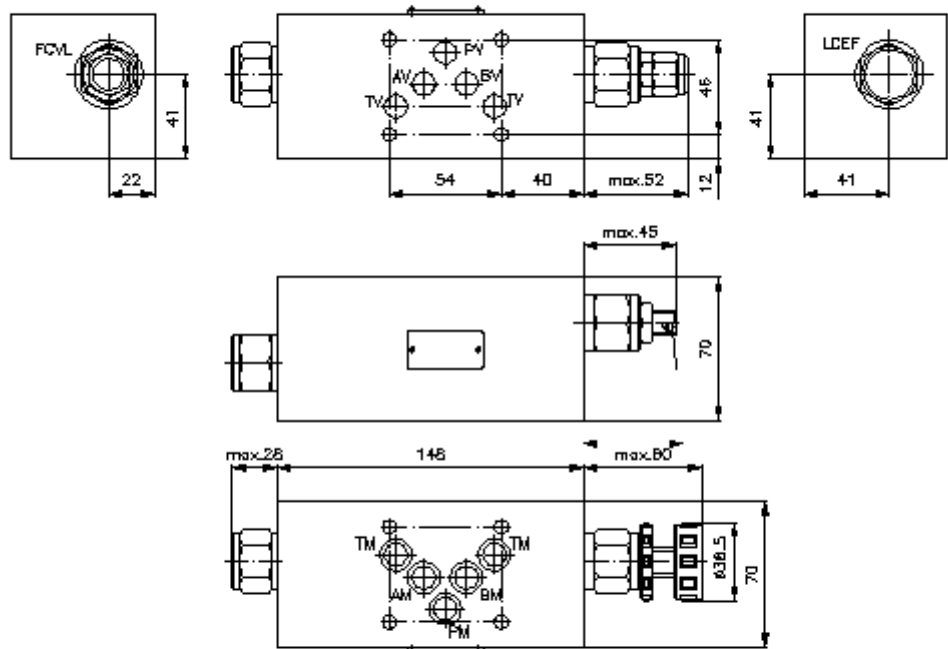
 **Symbol:**

Nom. pressure:
250 bar



IZ-670-450-00

(Subject to change!)



**3 way flow reg. valve CETOP 5
(sandwich plate) in B to T
SR3Z-10A-BVL.**



IMAV-Hydraulik GmbH
Breite Strasse 10
D-40670 Meerbusch (Osterath)
Phone +49 (0)2159 - 9188.0
Fax +49 (0)2159 - 4242
E-mail: info@imav.com
Internet: <http://www.imav.com>

IZ-670-450-00

(Subject to change!)

Ordering example:

SR3Z - 10A - B VL C
| | | | |
A B C D E

Model code:

- | | |
|--|--|
| <p>A design
flow regulator valve
with mounting interface DIN 24340 form A
sandwichplate design</p> <p>B size and material
10A = aluminum (F37)</p> <p>C function mode
B = in B acting (supply flow)</p> | <p>D throttle valve
VL = FCVL-10.-..</p> <p>E adjustment
S = screw adjustment
C = cap
K = handknob</p> |
|--|--|

Technical Data:

nominal pressure: 250 bar
weight: 2. 2 kg
logic element valve: LCEF-10.-A-F-0-100 see datasheet no. [CD-210-101-00](#)
throttle check valve: FCVL-10.-.. see datasheet no. [CF-100-101-00](#)
seals: included:
5 pcs. O-ring 12.42 x 1.78