

**2 way pres.comp.sandw.plate CETOP 5
(fixed) in P with L-hole
DWMZ-10A-P/10-F-F-...**

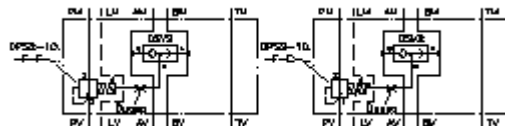


IMAV-Hydraulik GmbH
Breite Strasse 10
D-40670 Meerbusch (Osterath)
Phone +49 (0)2159 - 9188.0
Fax +49 (0)2159 - 4242
E-mail: info@imav.com
Internet: <http://www.imav.com>

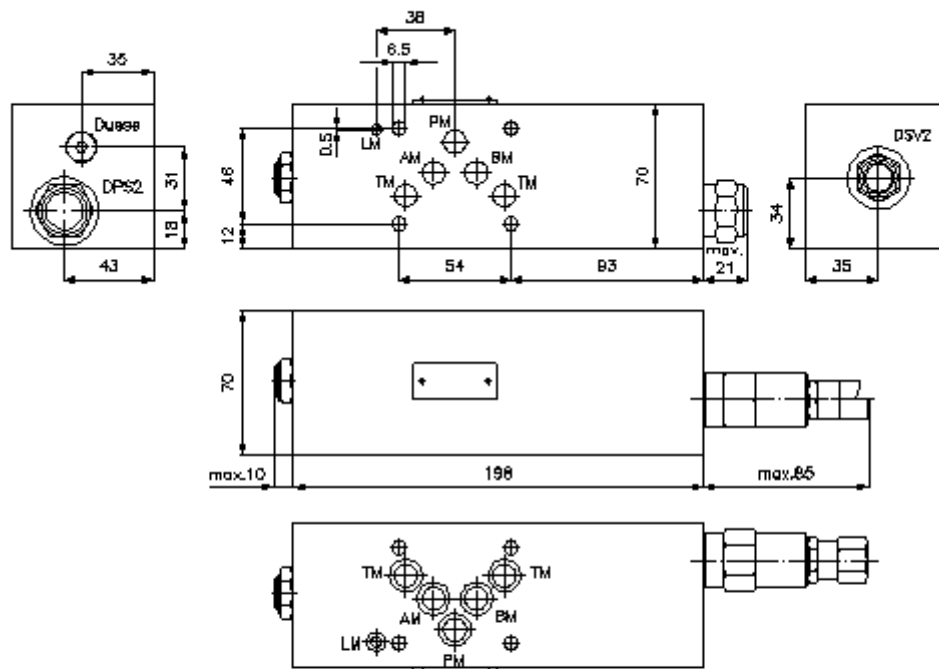
Symbol:

Nom. pressure:
250 bar

Nominal flow:
60 l/min.



IZ-710-400-00
(Subject to change!)



**2 way pres.comp.sandw.plate CETOP 5
(fixed) in P with L-hole
DWMZ-10A-P/10-F-F-...**



IMAV-Hydraulik GmbH
Breite Strasse 10
D-40670 Meerbusch (Osterath)
Phone +49 (0)2159 - 9188.0
Fax +49 (0)2159 - 4242
E-mail: info@imav.com
Internet: <http://www.imav.com>

IZ-710-400-00

(Subject to change!)

Ordering example:

DWMZ - 10A - P / 10 - F - F - 080
| | | | | | |
A **B** **C** **D** **E** **F** **G**

Model code:

- | | |
|--|---|
| <p>A design
pressure compensator
with mounting interface DIN 24340 form A
sandwichplate design</p> <p>B size and material
10A = aluminum (F37)</p> <p>C function mode
P = in P acting</p> <p>D pressure compensator
10 = DPS2-10.-F-..</p> | <p>E spool type
F = flow regulation (hydrostatic)
base position open</p> <p>F adjustment
F = fixed</p> <p>G pressure range (DPS2)
080 = 5.5 bar
160 = 11.0 bar</p> |
|--|---|

Technical Data:

nominal pressure:	250 bar
nominal flow:	60 l/min
weight:	2.2 kg
shuttle valve:	DSV2-08.-B-0 see datasheet no. MC-320-081-00
logic element valve:	DPS2-10.-F-.. see datasheet no. MD-750-101-00
included:	5 pcs. O-ring 12.42 x 1.78 1 pc. O-ring 6.07 x 1.78