

**2 way pres.comp.sandw.plate CETOP 5
(fixed) in P with X+Y-hole
DWMZ-10A-P/16-F-F-...**



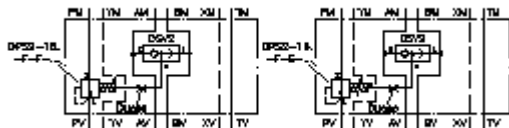
IMAV-Hydraulik GmbH
Breite Strasse 10
D-40670 Meerbusch (Osterath)
Phone +49 (0)2159 - 9188.0
Fax +49 (0)2159 - 4242
E-mail: info@imav.com
Internet: <http://www.imav.com>



Symbol:

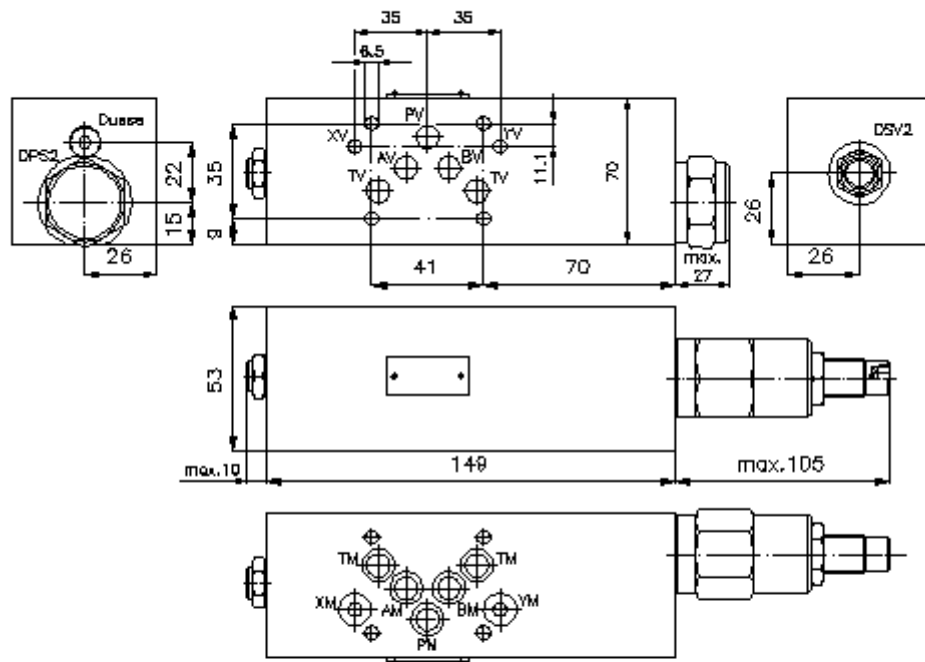
Nom. pressure:
250 bar

Nominal flow:
190 l/min.



IZ-710-410-00

(Subject to change!)



**2 way pres.comp.sandw.plate CETOP 5
(fixed) in P with X+Y-hole
DWMZ-10A-P/16-F-F-...**



IMAV-Hydraulik GmbH
Breite Strasse 10
D-40670 Meerbusch (Osterath)
Phone +49 (0)2159 - 9188.0
Fax +49 (0)2159 - 4242
E-mail: info@imav.com
Internet: <http://www.imav.com>

IZ-710-410-00

(Subject to change!)

Ordering example:

DWMZ - 10A - P / 16 - F - F - 080
| | | | | | |
A **B** **C** **D** **E** **F** **G**

Model code:

- | | |
|--|---|
| <p>A design
pressure compensator
with mounting interface DIN 24340 form A
sandwichplate design</p> <p>B size and material
10A = aluminum (F37)</p> <p>C function mode
P = in P acting</p> <p>D pressure compensator
16 = DPS2-16.-F-..</p> | <p>E spool type
F = flow regulation (hydrostatic)
base position open</p> <p>F adjustment
F = fixed</p> <p>G pressure range (DPS2)
080 = 5.5 bar
160 = 11.0 bar</p> |
|--|---|

Technical Data:

nominal pressure: 250 bar
nominal flow: 190 l/min
weight: 2.4 kg
shuttle valve: DSV2-08.-B-0 see datasheet no. [MC-320-081-00](#)
logic element valve: DPS2-16.-F-.. see datasheet no. [MD-750-161-00](#)
included: 7 pcs. O-ring 12.42 x 1.78