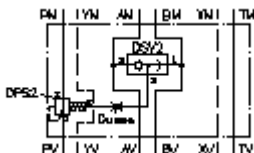


**2 way pres.comp.sandw.plate CETOP 7
(fixed) in P with X+Y-hole
DWMZ-16A-P-F-F-...**



IMAV-Hydraulik GmbH
Breite Strasse 10
D-40670 Meerbusch (Osterath)
Phone +49 (0)2159 - 9188.0
Fax +49 (0)2159 - 4242
E-mail: info@imav.com
Internet: <http://www.imav.com>

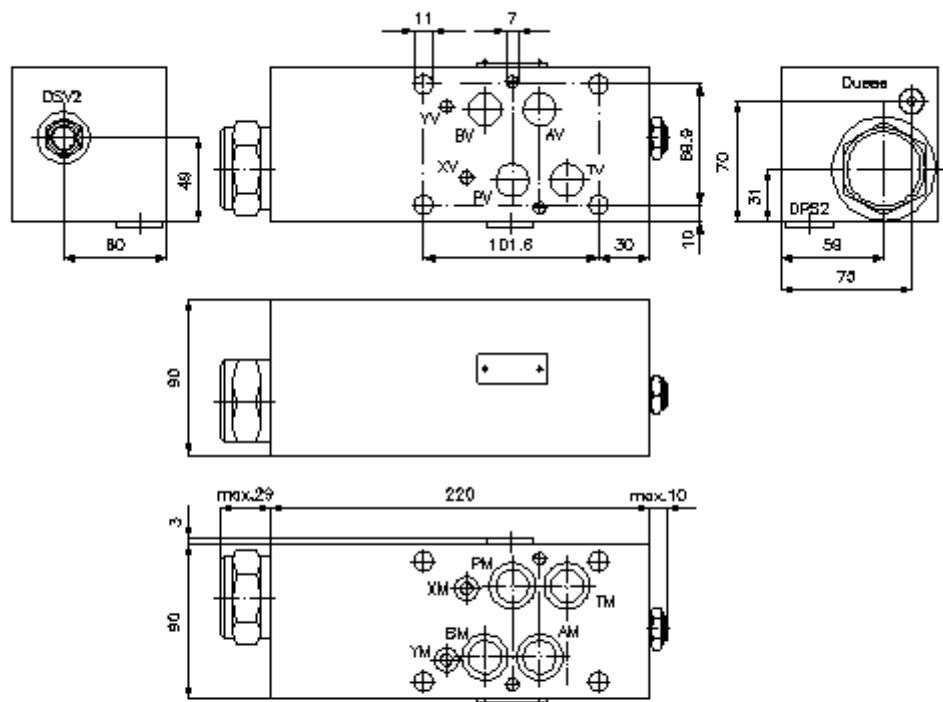
Symbol:



Nom. pressure:
250 bar

Nominal flow:
300 l/min.

IZ-710-500-00
(Subject to change!)



**2 way pres.comp.sandw.plate CETOP 7
(fixed) in P with X+Y-hole
DWMZ-16A-P-F-F-...**



IMAV-Hydraulik GmbH
Breite Strasse 10
D-40670 Meerbusch (Osterath)
Phone +49 (0)2159 - 9188.0
Fax +49 (0)2159 - 4242
E-mail: info@imav.com
Internet: <http://www.imav.com>

IZ-710-500-00

(Subject to change!)

Ordering example:

DWMZ - 16A - P - F - F - 080
| | | | | |
A **B** **C** **D** **E** **F**

Model code:

- A design**
pressure compensator
with mounting interface DIN 24340 form A
sandwichplate design
- B size and material**
16A = aluminum (F37)
- C function mode**
P = in P acting

- D spool type**
F = flow regulation (hydrostatic)
base position open

- E adjustment**
F = fixed

- F pressure range (DPS2)**
080 = 5.5 bar
160 = 11.0 bar

Technical Data:

nominal pressure: 250 bar
nominal flow: 300 l/min
weight: 5.1 kg
shuttle valve: DSV2-08.-B-0 see datasheet no. [MC-320-081-00](#)
logic element valve: DPS2-20.-F-.. see datasheet no. [MD-750-201-00](#)
included: 4 pcs. O-ring 22.42 x 2.62
1 pc. O-ring 9.19 x 2.62