

**2 way pres.comp.sandw.plate CETOP 5
(fixed) in T with L-hole
DWMZ-10A-T/10-F-...**



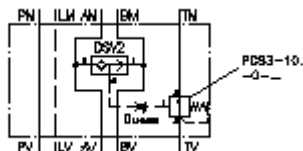
IMAV-Hydraulik GmbH
Breite Strasse 10
D-40670 Meerbusch (Osterath)
Phone +49 (0)2159 - 9188.0
Fax +49 (0)2159 - 4242
E-mail: info@imav.com
Internet: <http://www.imav.com>



Symbol:

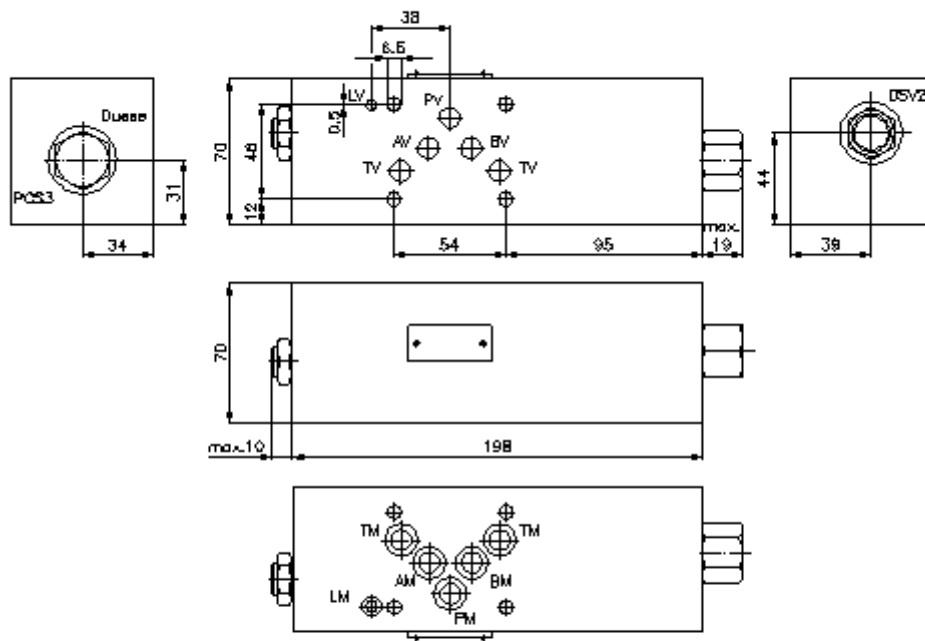
Nom. pressure:
210 bar

Nominal flow:
40 l/min.



IZ-730-400-00

(Subject to change!)



**2 way pres.comp.sandw.plate CETOP 5
(fixed) in T with L-hole
DWMZ-10A-T/10-F-...**



IMAV-Hydraulik GmbH
Breite Strasse 10
D-40670 Meerbusch (Osterath)
Phone +49 (0)2159 - 9188.0
Fax +49 (0)2159 - 4242
E-mail: info@imav.com
Internet: <http://www.imav.com>

IZ-730-400-00

(Subject to change!)

Ordering example:

DWMZ - 10A - T / 10 - F - 080
| | | | | |
A **B** **C** **D** **E** **F**

Model code:

- A design**
pressure compensator
with mounting interface DIN 24340 form A
sandwichplate design
- B size and material**
10A = aluminum (F37)
- C function mode**
T = in T acting

- D pressure compensator**
10 = PCS3-10.-0-..
- E adjustment**
F = fixed
- F pressure range (PCS3)**
040 = 2.8 bar
080 = 5.5 bar
160 = 11.0 bar

Technical Data:

- note:** The at the symbol shown orifice can be used as required.
The matching bore (port 1 of the PCS3) will have the thread size M 6.
- nominal pressure:** 210 bar
- nominal flow:** 40 l/min
- weight:** 2.2 kg
- shuttle valve:** DSV2-08.-B-0 see datasheet no. [MC-320-081-00](#)
- pressure compensator valve:** PCS3-10.-0-.. see datasheet no. [MF-610-100-00](#)
- included:** 5 pcs. O-ring 12.42 x 1.78
1 pc. O-ring 6.07 x 1.78