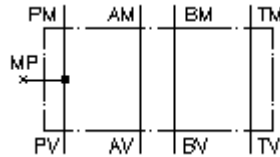


**adapter plate CETOP 5 to CETOP 3
(sandwich plate) for 4-way valve
APR-10./06.**



Symbol:

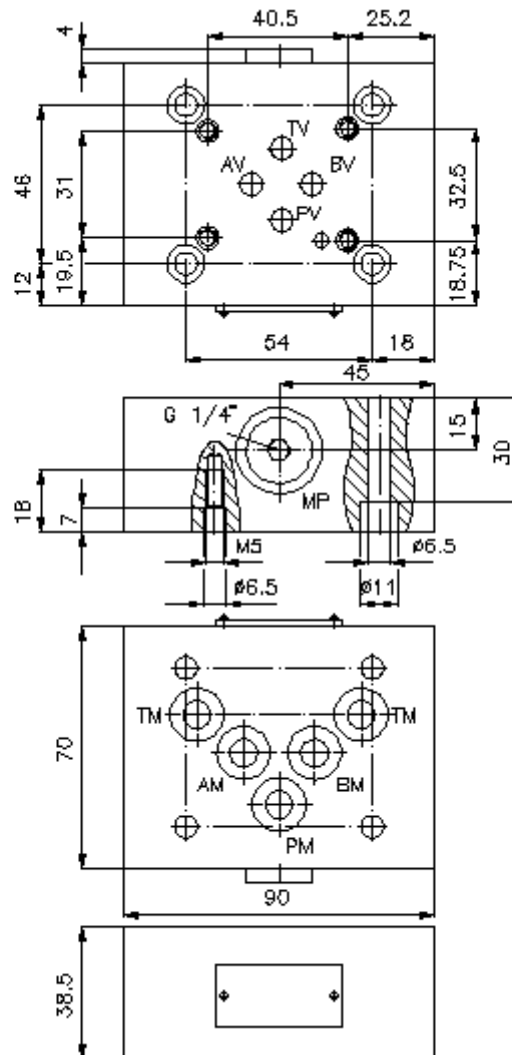
Nom. pressure:
350 bar



IMAV-Hydraulik GmbH
Breite Strasse 10
D-40670 Meerbusch (Osterath)
Phone +49 (0)2159 - 9188.0
Fax +49 (0)2159 - 4242
E-mail: info@imav.com
Internet: <http://www.imav.com>

IZ-810-400-00

(Subject to change!)



**adapter plate CETOP 5 to CETOP 3
(sandwich plate) for 4-way valve
APR-10./06.**

Ordering example:

APR - 10S/06S-VITON

|
A

|
B



IMAV-Hydraulik GmbH
Breite Strasse 10
D-40670 Meerbusch (Osterath)
Phone +49 (0)2159 - 9188.0
Fax +49 (0)2159 - 4242
E-mail: info@imav.com
Internet: <http://www.imav.com>

IZ-810-400-00

(Subject to change!)

Model code:

A **design**
adapter-plate
with mounting interface DIN 24340 form A
mounting

B **size and material**
reduction from CETOP 5 to CETOP 3
10A/06A = aluminum (F37)
10S/06S = steel (9SMnPb28K resp. GGG-40)

Technical Data:

nominal pressure: 250 bar (A)
350 bar (S)
weight: 0.7 / 1.8 kg (A/S)
included: 5 pcs. O-Ring 12.42 x 1.78