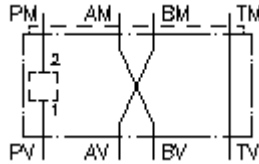


**multiple adapter plate, CETOP 5/3
(sandwich plate) w.C-10-2 in P
MGAP-10S/06S-PP**



Symbol:

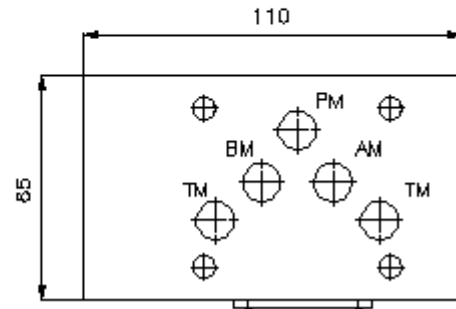
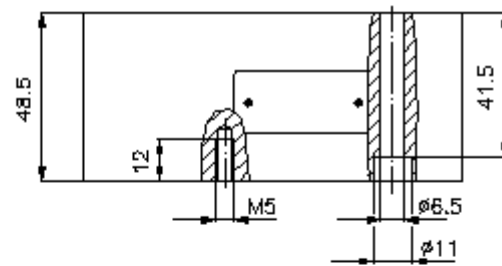
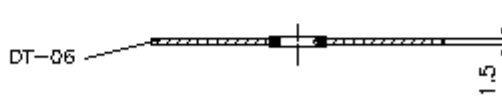
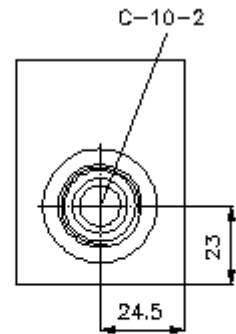
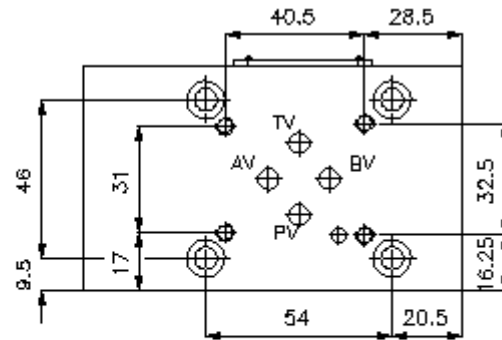
Nom. pressure:
350 bar



IMAV-Hydraulik GmbH
Breite Strasse 10
D-40670 Meerbusch (Osterath)
Phone +49 (0)2159 - 9188.0
Fax +49 (0)2159 - 4242
E-mail: info@imav.com
Internet: <http://www.imav.com>

IZ-810-410-00

(Subject to change!)



**multiple adapter plate,CETOP 5/3
(sandwich plate) w.C-10-2 in P
MGAP-10S/06S-PP**



IMAV-Hydraulik GmbH
Breite Strasse 10
D-40670 Meerbusch (Osterath)
Phone +49 (0)2159 - 9188.0
Fax +49 (0)2159 - 4242
E-mail: info@imav.com
Internet: <http://www.imav.com>

IZ-810-410-00

(Subject to change!)

Ordering example:

MGAP - 10S/06S - PP

|
A

|
B

|
C

Model code:

A design
multipurpose adapter plate
with mounting interface DIN 24340 form A
for 4 way valve

B size and material
reduction from CETOP 5 to CETOP 3
10S/06S = steel (9SMnPb28K resp. GGG-40)

C function mode
PP = P with P connected

Technical Data:

note: These multi-purpose-adapter-plate MGAP-10S/06S-.. have a cavity type C-10-20, and can be completed with either Modular/EATON- or Command Controls-screw-in valves.

nominal pressure: 350 bar

weight: 2.6 kg

included: DT-10 = sealing plate with vulcanized O-ring (Viton FPM)