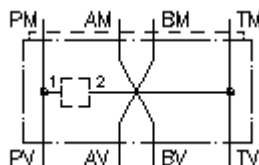


**multiple adapter plate, CETOP 5/3
(sandwich plate) w.C-10-2 fr.P to T
MGAP-10S/06S-PT**



Symbol:

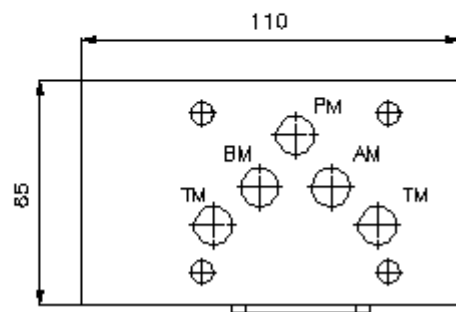
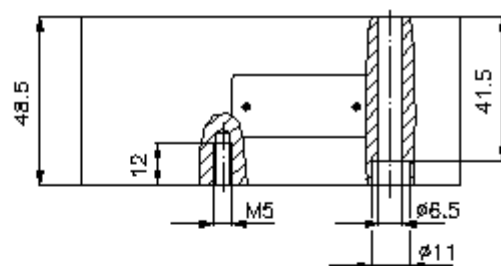
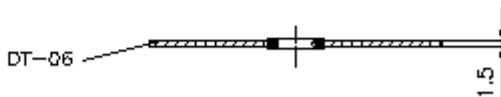
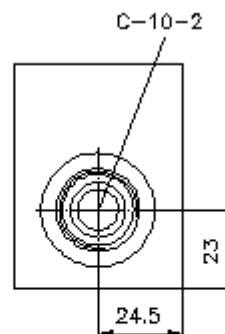
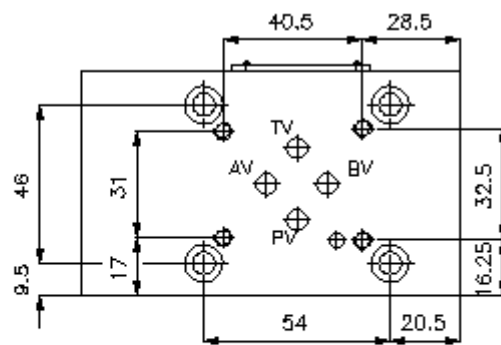
Nom. pressure:
350 bar



IMAV-Hydraulik GmbH
Breite Strasse 10
D-40670 Meerbusch (Osterath)
Phone +49 (0)2159 - 9188.0
Fax +49 (0)2159 - 4242
E-mail: info@imav.com
Internet: <http://www.imav.com>

IZ-810-411-00

(Subject to change!)



**multiple adapter plate,CETOP 5/3
(sandwich plate) w.C-10-2 fr.P to T
MGAP-10S/06S-PT**



Ordering example:

MGAP - 10S/06S - PT
| | |
A **B** **C**

IMAV-Hydraulik GmbH
Breite Strasse 10
D-40670 Meerbusch (Osterath)
Phone +49 (0)2159 - 9188.0
Fax +49 (0)2159 - 4242
E-mail: info@imav.com
Internet: <http://www.imav.com>

IZ-810-411-00
(Subject to change!)

Model code:

- A design**
multipurpose adapter plate
with mounting interface DIN 24340 form A
for 4 way valve
- B size and material**
reduction from CETOP 5 to CETOP 3
10S/06S = steel (9SMnPb28K resp. GGG-40)
- C function mode**
PT = P with T connected

Technical Data:

- note:** These multi-purpose-adapter-plate MGAP-10S/06S-.. have a cavity type C-10-20, and can be completed with either Modular/EATON- or Command Controls-screw-in valves.
- nominal pressure:** 350 bar
- weight:** 2.6 kg
- included:** DT-10 = sealing plate with vulcanized O-ring (Viton FPM)