

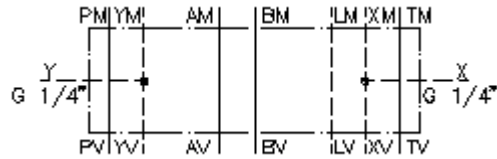
**adapter plate CETOP 8 to CETOP 7  
(sandwich plate) XY ext. BSPP 1/4"**  
AP-25S/16S-XY-B02



IMAV-Hydraulik GmbH  
Breite Strasse 10  
D-40670 Meerbusch (Osterath)  
Phone +49 (0)2159 - 9188.0  
Fax +49 (0)2159 - 4242  
E-mail: [info@imav.com](mailto:info@imav.com)  
Internet: <http://www.imav.com>

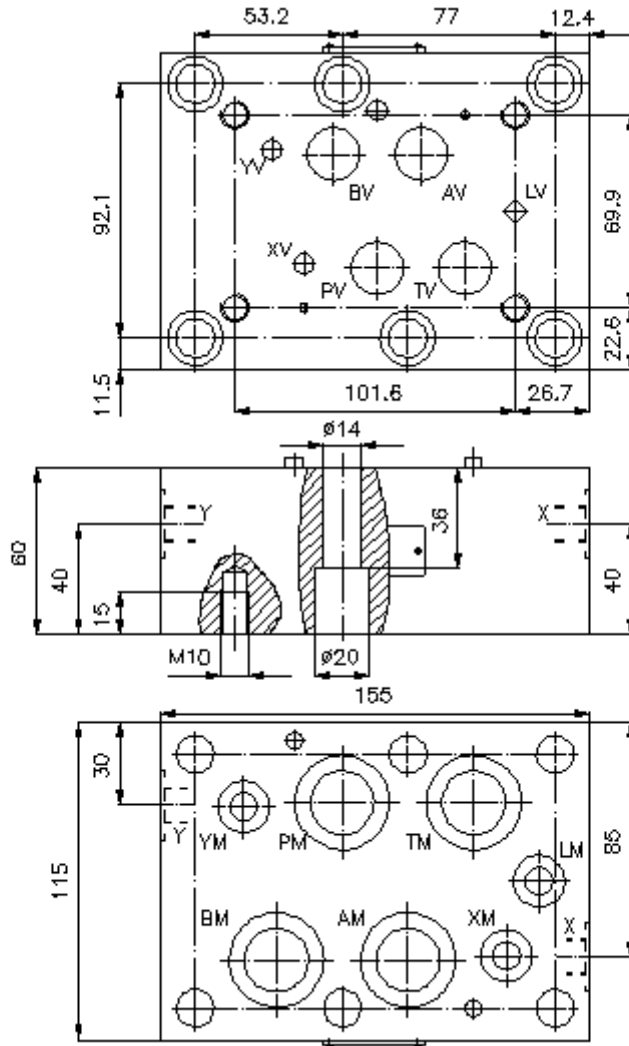
**Symbol:**

**Nom. pressure:**  
350 bar



**IZ-810-601-00**

(Subject to change!)



**adapter plate CETOP 8 to CETOP 7  
(sandwich plate) XY ext. BSPP 1/4"  
AP-25S/16S-XY-B02**



IMAV-Hydraulik GmbH  
Breite Strasse 10  
D-40670 Meerbusch (Osterath)  
Phone +49 (0)2159 - 9188.0  
Fax +49 (0)2159 - 4242  
E-mail: [info@imav.com](mailto:info@imav.com)  
Internet: <http://www.imav.com>

**IZ-810-601-00**

(Subject to change!)

**Ordering example:**

AP - 25S/16S XY - B02  
| | | |  
**A** **B** **C** **D**

**Model code:**

- A design**  
adapter-plate  
with mounting interface DIN 24340 form A
- B size and material**  
reduction from CETOP 8 to CETOP 7  
25S/16S = steel (9SMnPb28K resp. GGG-40)

- C function mode**  
XY = mit X und Y Bohrung
- D thread size**  
B02 = BSPP 1/4"

**Technical Data:**

- nominal pressure:** 350 bar
- weight:** 6.3 kg
- included:** 4 pcs. O-Ring 28.17 x 3.53  
3 pcs. O-Ring 14.00 x 2.65