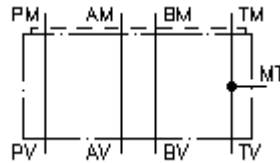


**gauge port plate, CETOP 3  
(sandwich plate) port in T  
MPZ-06.-T-B..**



**Symbol:**

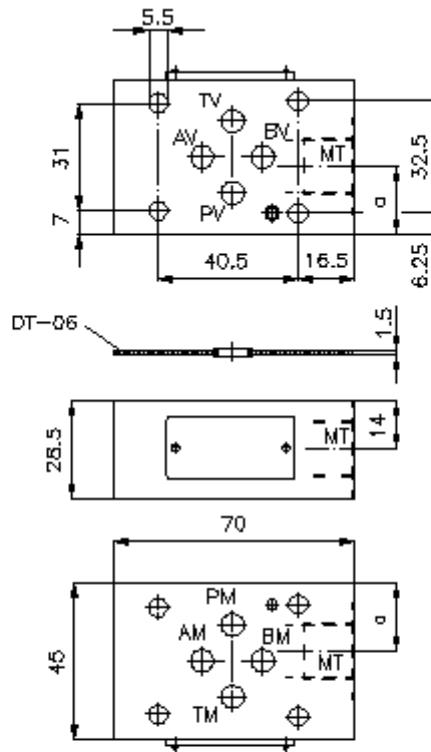
**Nom. pressure:**  
350 bar



IMAV-Hydraulik GmbH  
Breite Strasse 10  
D-40670 Meerbusch (Osterath)  
Phone +49 (0)2159 - 9188.0  
Fax +49 (0)2159 - 4242  
E-mail: [info@imav.com](mailto:info@imav.com)  
Internet: <http://www.imav.com>

**IZ-830-201-00**

(Subject to change!)



	a
MPZ-06.-T-B02	18.10
MPZ-06.-T-B03	19.85

**gauge port plate, CETOP 3  
(sandwich plate) port in T  
MPZ-06.-T-B..**



IMAV-Hydraulik GmbH  
Breite Strasse 10  
D-40670 Meerbusch (Osterath)  
Phone +49 (0)2159 - 9188.0  
Fax +49 (0)2159 - 4242  
E-mail: [info@imav.com](mailto:info@imav.com)  
Internet: <http://www.imav.com>

**IZ-830-201-00**

(Subject to change!)

**Ordering example:**

MPZ - 06S - T - B02  
|        |        |        |  
**A**    **B**    **C**    **D**

**Model code:**

- A design**  
gauge plate  
with mounting interface DIN 24340 form A  
sandwichplate design
- B size and material**  
06A = aluminum (F37)  
06S = steel (9SMnPb28K resp. GGG-40)

- C function mode**  
T = with gauge port at T
- D thread size**  
B02 = BSPP 1/4"  
B03 = BSPP 3/8"

**Technical Data:**

- nominal pressure:** 250 bar (A)  
350 bar (S)
- weight:** 0.3 / 0.7 kg (A/S)
- included:** DT-06 = sealing plate with vulcanized O-ring (Viton FPM)