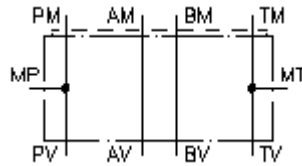


**gauge port plate, CETOP 3
(sandwich plate) port in P+T
MPZ-06.-P+T-B..**



Symbol:

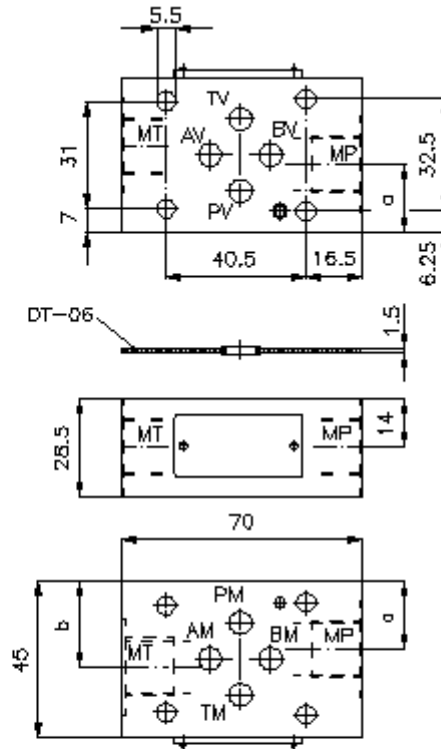
Nom. pressure:
350 bar



IMAV-Hydraulik GmbH
Breite Strasse 10
D-40670 Meerbusch (Osterath)
Phone +49 (0)2159 - 9188.0
Fax +49 (0)2159 - 4242
E-mail: info@imav.com
Internet: <http://www.imav.com>

IZ-830-202-00

(Subject to change!)



	a	b
MPZ-06.-P+T-B02	18.10	26.50
MPZ-06.-P+T-B03	19.85	24.75

**gauge port plate, CETOP 3
(sandwich plate) port in P+T
MPZ-06.-P+T-B..**



IMAV-Hydraulik GmbH
Breite Strasse 10
D-40670 Meerbusch (Osterath)
Phone +49 (0)2159 - 9188.0
Fax +49 (0)2159 - 4242
E-mail: info@imav.com
Internet: <http://www.imav.com>

IZ-830-202-00

(Subject to change!)

Ordering example:

MPZ - 06S - P+T - B03
| | | |
A **B** **C** **D**

Model code:

- A design**
gauge plate
with mounting interface DIN 24340 form A
sandwichplate design
- B size and material**
06A = aluminum (F37)
06S = steel (9SMnPb28K resp. GGG-40)

- C function mode**
P+T = with gauge port at P and T
- D thread size**
B02 = BSPP 1/4"
B03 = BSPP 3/8"

Technical Data:

- nominal pressure:** 250 bar (A)
350 bar (S)
- weight:** 0.3 / 0.7 kg (A/S)
- included:** DT-06 = sealing plate with vulcanized O-ring (Viton FPM)