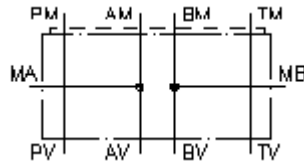


**gauge port plate, CETOP 5
(sandwich plate) port in A+B
MPZ-10.-A+B-B..**



IMAV-Hydraulik GmbH
Breite Strasse 10
D-40670 Meerbusch (Osterath)
Phone +49 (0)2159 - 9188.0
Fax +49 (0)2159 - 4242
E-mail: info@imav.com
Internet: <http://www.imav.com>

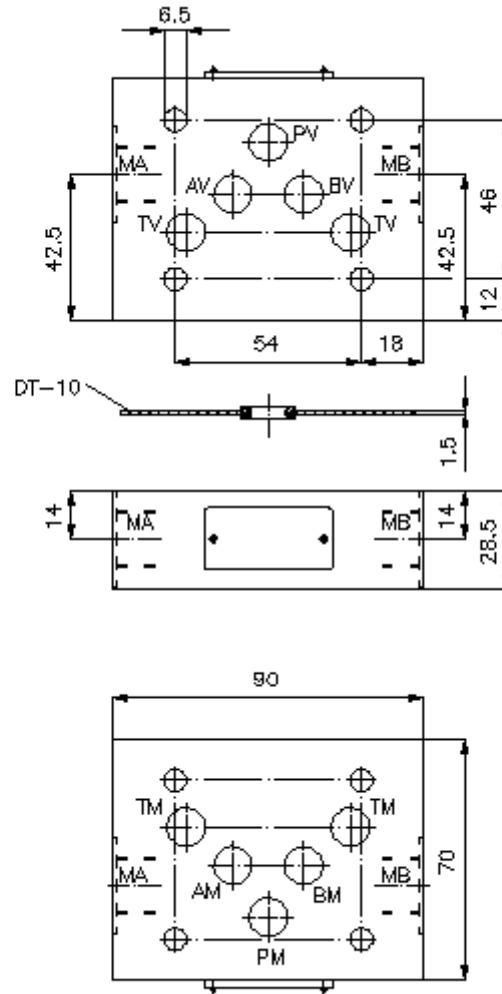
 **Symbol:**



Nom. pressure:
350 bar

IZ-830-402-00

(Subject to change!)



**gauge port plate, CETOP 5
(sandwich plate) port in A+B
MPZ-10.-A+B-B..**



IMAV-Hydraulik GmbH
Breite Strasse 10
D-40670 Meerbusch (Osterath)
Phone +49 (0)2159 - 9188.0
Fax +49 (0)2159 - 4242
E-mail: info@imav.com
Internet: <http://www.imav.com>

IZ-830-402-00

(Subject to change!)

Ordering example:

MPZ - 10A - A+B - B03
| | | |
A **B** **C** **D**

Model code:

- A design**
gauge plate
with mounting interface DIN 24340 form A
sandwichplate design
- B size and material**
10A = aluminum (F37)
10S = steel (9SMnPb28K resp. GGG-40)

- C function mode**
A+B = with gauge port at A and B
- D thread size**
B02 = BSPP 1/4"
B03 = BSPP 3/8"

Technical Data:

- nominal pressure:** 250 bar (A)
350 bar (S)
- weight:** 0.5 / 1.4 kg (A/S)
- included:** DT-10 = sealing plate with vulcanized O-ring (Viton FPM)