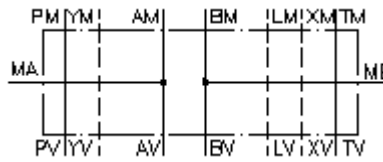


**gauge port plate, CETOP 7
(sandwich plate) port in A+B
MPZ-16.-A+B-B02**



Symbol:

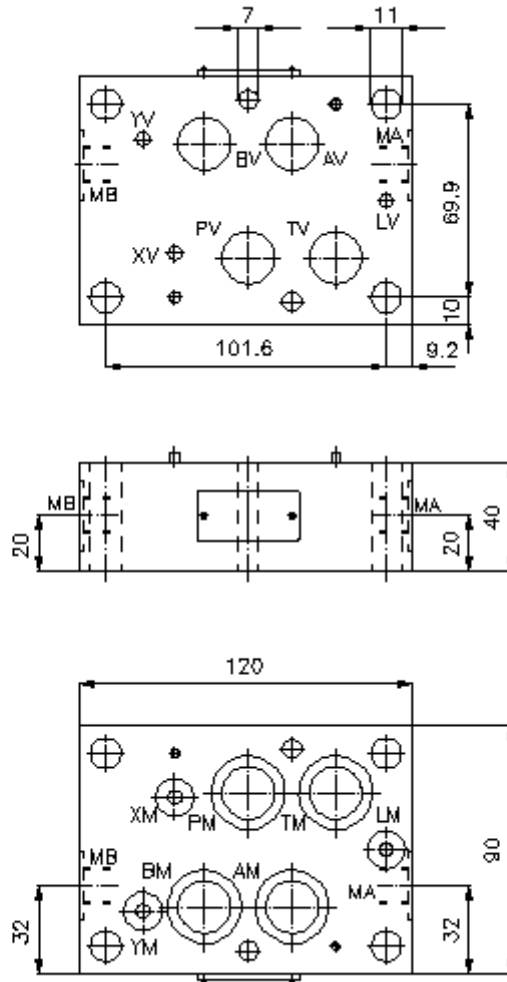
Nom. pressure:
350 bar



IMAV-Hydraulik GmbH
Breite Strasse 10
D-40670 Meerbusch (Osterath)
Phone +49 (0)2159 - 9188.0
Fax +49 (0)2159 - 4242
E-mail: info@imav.com
Internet: <http://www.imav.com>

IZ-830-502-00

(Subject to change!)



**gauge port plate, CETOP 7
(sandwich plate) port in A+B
MPZ-16.-A+B-B02**



IMAV-Hydraulik GmbH
Breite Strasse 10
D-40670 Meerbusch (Osterath)
Phone +49 (0)2159 - 9188.0
Fax +49 (0)2159 - 4242
E-mail: info@imav.com
Internet: <http://www.imav.com>

IZ-830-502-00

(Subject to change!)

Ordering example:

MPZ - 16A - A+B - B02
| | | |
A **B** **C** **D**

Model code:

A design
gauge plate
with mounting interface DIN 24340 form A
sandwichplate design

B size and material
16A = aluminum (F37)
16S = steel (9SMnPb28K resp. GGG-40)

C function mode
A+B = with gauge port at A and B

D thread size
B02 = BSPP 1/4"

Technical Data:

nominal pressure: 250 bar (A)
350 bar (S)

weight: 1.2 / 3.2 kg (A/S)

included: 4 pcs. O-ring 22.22 x 2.62
3 pcs. O-ring 9.19 x 2.62