

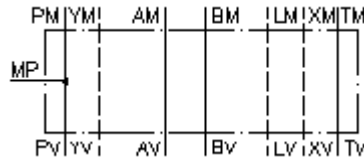
**gauge port plate, CETOP 8
(sandwich plate) port in P
MPZ-25A-P-B02**



IMAV-Hydraulik GmbH
Breite Strasse 10
D-40670 Meerbusch (Osterath)
Phone +49 (0)2159 - 9188.0
Fax +49 (0)2159 - 4242
E-mail: info@imav.com
Internet: <http://www.imav.com>

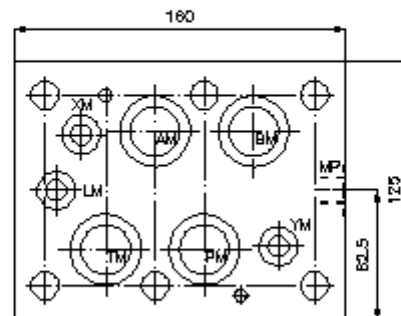
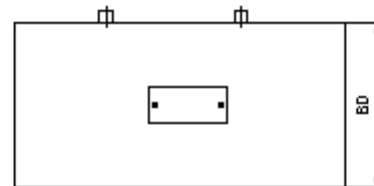
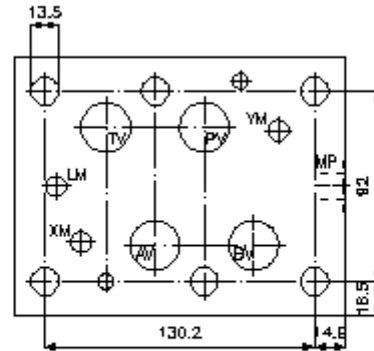
Symbol:

Nom. pressure:
250 bar



IZ-830-600-00

(Subject to change!)



**gauge port plate, CETOP 8
(sandwich plate) port in P
MPZ-25A-P-B02**



IMAV-Hydraulik GmbH
Breite Strasse 10
D-40670 Meerbusch (Osterath)
Phone +49 (0)2159 - 9188.0
Fax +49 (0)2159 - 4242
E-mail: info@imav.com
Internet: <http://www.imav.com>

IZ-830-600-00

(Subject to change!)

Ordering example:

MPZ - 25A - P - B02
| | | |
A **B** **C** **D**

Model code:

A design
gauge plate
with mounting interface DIN 24340 form A
sandwichplate design

B size and material
16A = aluminum (F37)

C function mode
P = with gauge port at P

D thread size
B02 = BSPP 1/4"

Technical Data:

nominal pressure: 250 bar

weight: 4.1 kg

included: 4 pcs. O-ring 28.17 x 3.53
3 pcs. O-ring 14.00 x 2.62