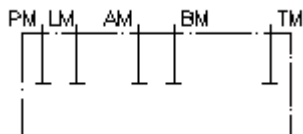


**blanking plate CETOP 5**  
**P,T,A,B and L closed**  
**VSP-10.-L**



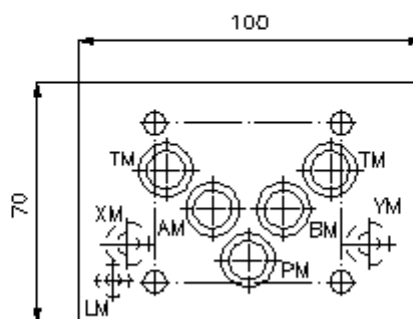
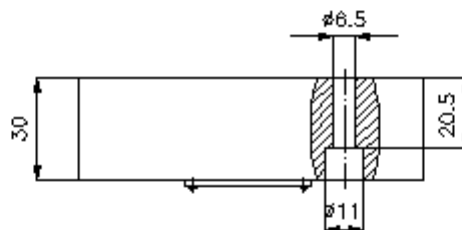
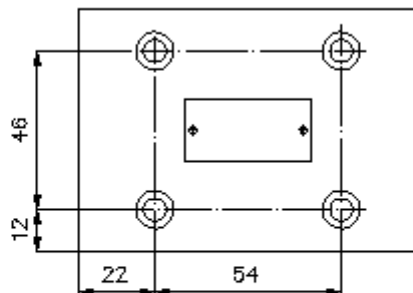
IMAV-Hydraulik GmbH  
 Breite Strasse 10  
 D-40670 Meerbusch (Osterath)  
 Phone +49 (0)2159 - 9188.0  
 Fax +49 (0)2159 - 4242  
 E-mail: [info@imav.com](mailto:info@imav.com)  
 Internet: <http://www.imav.com>

 **Symbol:**



**Nom. pressure:**  
 350 bar

**IZ-850-410-00**  
 (Subject to change!)



**blanking plate CETOP 5**  
**P,T,A,B and L closed**  
**VSP-10.-L**



IMAV-Hydraulik GmbH  
Breite Strasse 10  
D-40670 Meerbusch (Osterath)  
Phone +49 (0)2159 - 9188.0  
Fax +49 (0)2159 - 4242  
E-mail: [info@imav.com](mailto:info@imav.com)  
Internet: <http://www.imav.com>

**IZ-850-410-00**

(Subject to change!)

**Ordering example:**

VSP   - 10A -   L  
|            |            |  
**A**        **B**        **C**

**Model code:**

- A design**  
linking sandwich plate  
with mounting interface DIN 24340 form A
- B size and material**  
10A = aluminum (F37)  
10S = steel (9SMnPb28K resp. GGG-40)

- C function mode**  
L = with leakage hole

**Technical Data:**

- note:** required mounting screws:  
4 pcs. M6 x 30 DIN 912
- nominal pressure:** 250 bar (A)  
350 bar (S)
- weight:** 0.9 / 2.4 kg (A/S)
- included:** 5 pcs. O-Ring 12.42 x 1.78  
1 pcs. O-Ring 6.07 x 1.78