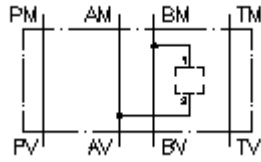


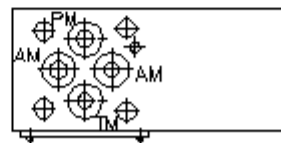
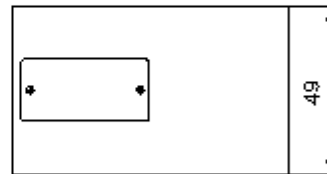
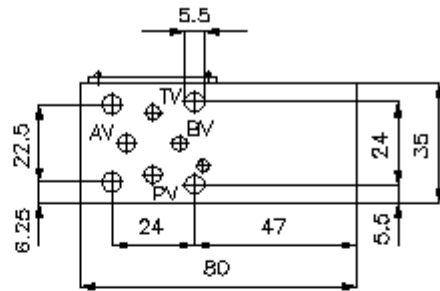
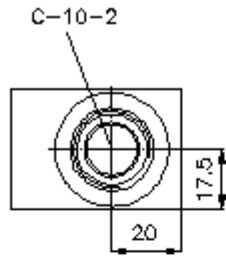
**multiple valve body, CETOP 2  
from A2 to B1  
MGZ-04.-A2/B1/10-05**



IMAV-Hydraulik GmbH  
Breite Strasse 10  
40670 Meerbusch - Germany  
fon +49 (0)2159 - 9188.0  
fax +49 (0)2159 - 4242  
e-mail: [info@imav.com](mailto:info@imav.com)  
internet: <http://www.imav.com>

**IZ-910-020-00**

(Subject to change!)



**multiple valve body, CETOP 2  
from A2 to B1  
MGZ-04.-A2/B1/10-05**



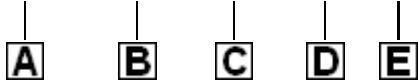
IMAV-Hydraulik GmbH  
Breite Strasse 10  
40670 Meerbusch - Germany  
fon +49 (0)2159 - 9188.0  
fax +49 (0)2159 - 4242  
e-mail: [info@imav.com](mailto:info@imav.com)  
internet: <http://www.imav.com>

**IZ-910-020-00**

(Subject to change!)

**Ordering example:**

MGZ - 04A - A2/B1 / 10 - 05



**Model code:**

- |   |  |
|---|--|
| <b>A</b> <b>design</b><br>multipurpose valve body<br>with mounting interface DIN 24340 form A<br>sandwichplate design | <b>C</b> <b>function mode</b><br>A2/B1 = for one screw-in valve between A<br>and B |
| <b>B</b> <b>size and material</b><br>04A = aluminum (F37)<br>04S = steel (9SMnPb28K resp. GGG-40)                     | <b>D</b> <b>size of cavity</b><br>size 10  |
|   | <b>E</b> <b>height</b><br>05 = 50 mm   |

**Technical Data:**

- nominal pressure:** 350 bar (S)  
250 bar (A)
- weight:** 0.4 / 1.1 kg (A/S)
- cavity:** C-10-2 see datasheet no. [IK-100-109-00](#)
- included:** 4 pcs. O-ring 6.80 x 1.78