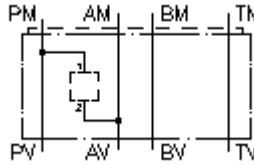


**multiple valve body, CETOP 3  
from A2 to P1  
MGZ-06.-A2/P1/10-04**



**Symbol:**

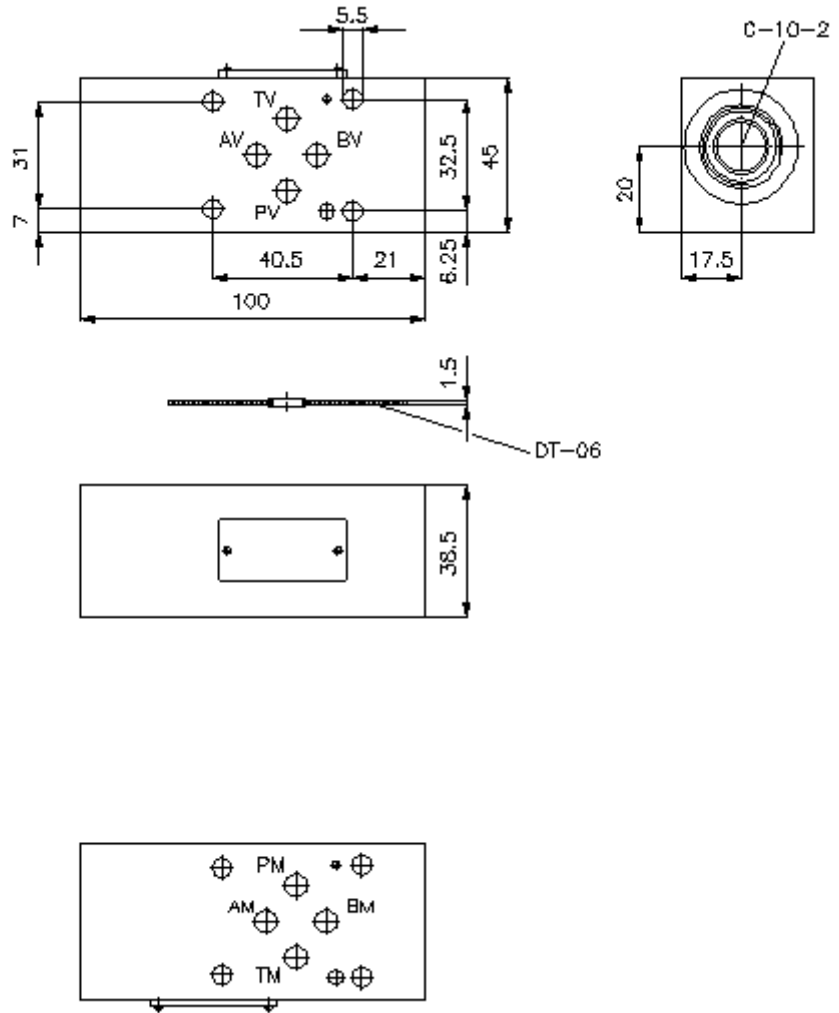
**Nom. pressure:**  
350 bar



IMAV-Hydraulik GmbH  
Breite Strasse 10  
D-40670 Meerbusch (Osterath)  
Phone +49 (0)2159 - 9188.0  
Fax +49 (0)2159 - 4242  
E-mail: [info@imav.com](mailto:info@imav.com)  
Internet: <http://www.imav.com>

**IZ-920-114-00**

(Subject to change!)



**multiple valve body, CETOP 3  
from A2 to P1  
MGZ-06.-A2/P1/10-04**



IMAV-Hydraulik GmbH  
Breite Strasse 10  
D-40670 Meerbusch (Osterath)  
Phone +49 (0)2159 - 9188.0  
Fax +49 (0)2159 - 4242  
E-mail: [info@imav.com](mailto:info@imav.com)  
Internet: <http://www.imav.com>

**IZ-920-114-00**

(Subject to change!)

**Ordering example:**

MGZ - 06A - A2/P1 / 10 - 04  
|           |           |           |           |  
**A**       **B**       **C**       **D**       **E**

**Model code:**

- |  |   |
|--|---|
| <p><b>A design</b><br/>multipurpose valve body<br/>with mounting interface DIN 24340 form A<br/>sandwichplate design</p> <p><b>B size and material</b><br/>06A = aluminum (F37)<br/>06S = steel (9SMnPb28K resp. GGG-40)</p> | <p><b>C function mode</b><br/>A2/T1 = for one screw-in valve between A<br/>and T</p> <p><b>D size of cavity</b><br/>size 10</p> <p><b>E height</b><br/>04 = 40 mm</p> |
|--|---|

**Technical Data:**

- note:** Concerning the flow direction it is important to review the ports "1" and "2" at the symbol. Rotating the multipurpose valve body CETOP 3, variant AA and BB around the longitudinal axis the flow direction will change: e.g. from port "1" to port "2" will change to port "2" to port "1", or vice versa (see symbol). Rotating around the longitudinal axis of the sandwich plate with a function at the P resp. T channel, the function will change from P to T and from T to P.
- nominal pressure:** 350 bar (S)  
250 bar (A)
- weight:** 0.5 / 1. 1 kg (A/S)
- cavity:** C-10-2 see datasheet no. [IK-100-109-00](#)
- included:** DT-06 = sealing plate with vulcanized O-ring (Viton FPM)