

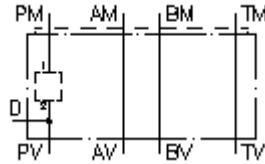
**multiple valve body, CETOP 3
from P to P with PD (BSPP 3/8")
MGZ-06S-PP/10/PD-04**



IMAV-Hydraulik GmbH
Breite Strasse 10
D-40670 Meerbusch (Osterath)
Phone +49 (0)2159 - 9188.0
Fax +49 (0)2159 - 4242
E-mail: info@imav.com
Internet: <http://www.imav.com>

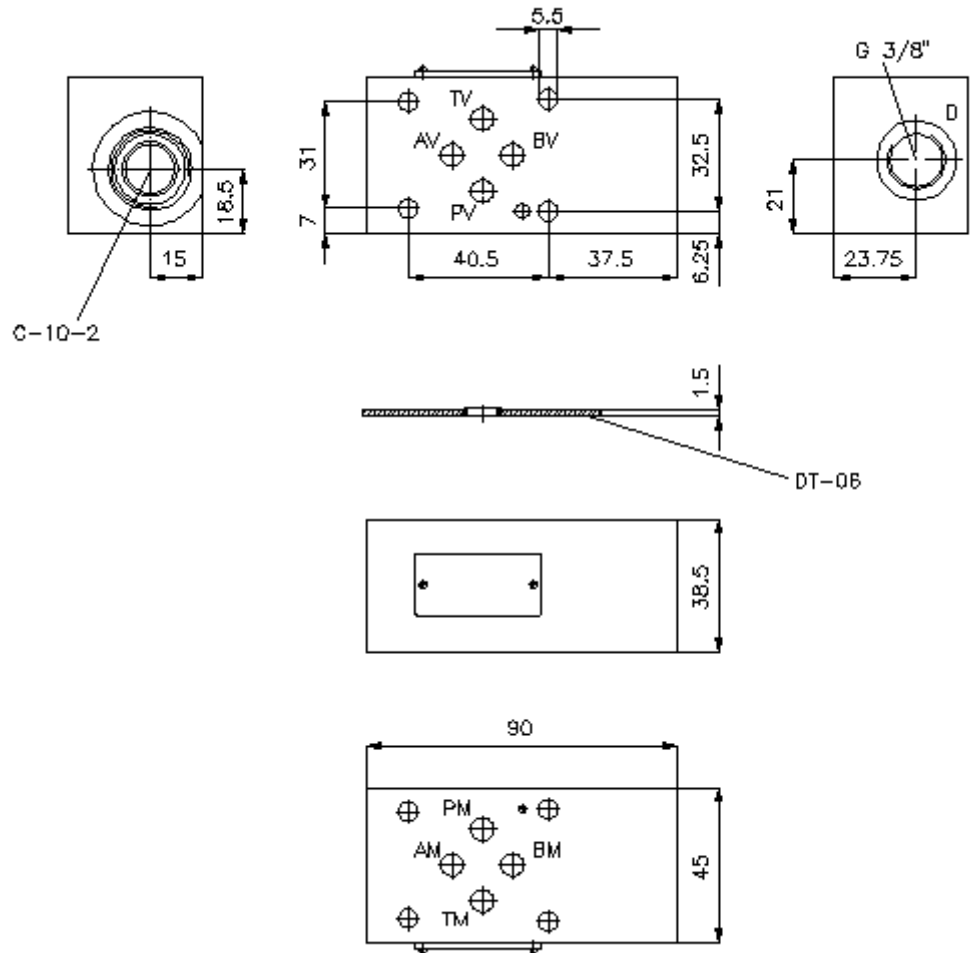
 **Symbol:**

Nom. pressure:
350 bar



IZ-920-240-00

(Subject to change!)



**multiple valve body, CETOP 3
from P to P with PD (BSPP 3/8")
MGZ-06S-PP/10/PD-04**



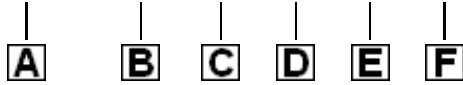
IMAV-Hydraulik GmbH
Breite Strasse 10
D-40670 Meerbusch (Osterath)
Phone +49 (0)2159 - 9188.0
Fax +49 (0)2159 - 4242
E-mail: info@imav.com
Internet: <http://www.imav.com>

IZ-920-240-00

(Subject to change!)

Ordering example:

MGZ - 06S - PP / 10 / PD - 04



Model code:

- | | |
|---|---|
| A design
multipurpose valve body
with mounting interface DIN 24340 form A
sandwichplate design | C function mode
PP = for one screw-in valve in P |
| B size and material
06S = steel (9SMnPb28K resp. GGG-40) | D size of cavity
size 10 |
| | E function mode
PD = accumulator port |
| | F height
04 = 40 mm |

Technical Data:

- nominal pressure:** 350 bar
weight: 1.1 kg (S)
cavity: C-10-2 see datasheet no. [IK-100-109-00](#)
included: DT-06 = sealing plate with vulcanized O-ring (Viton FPM)