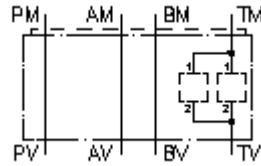


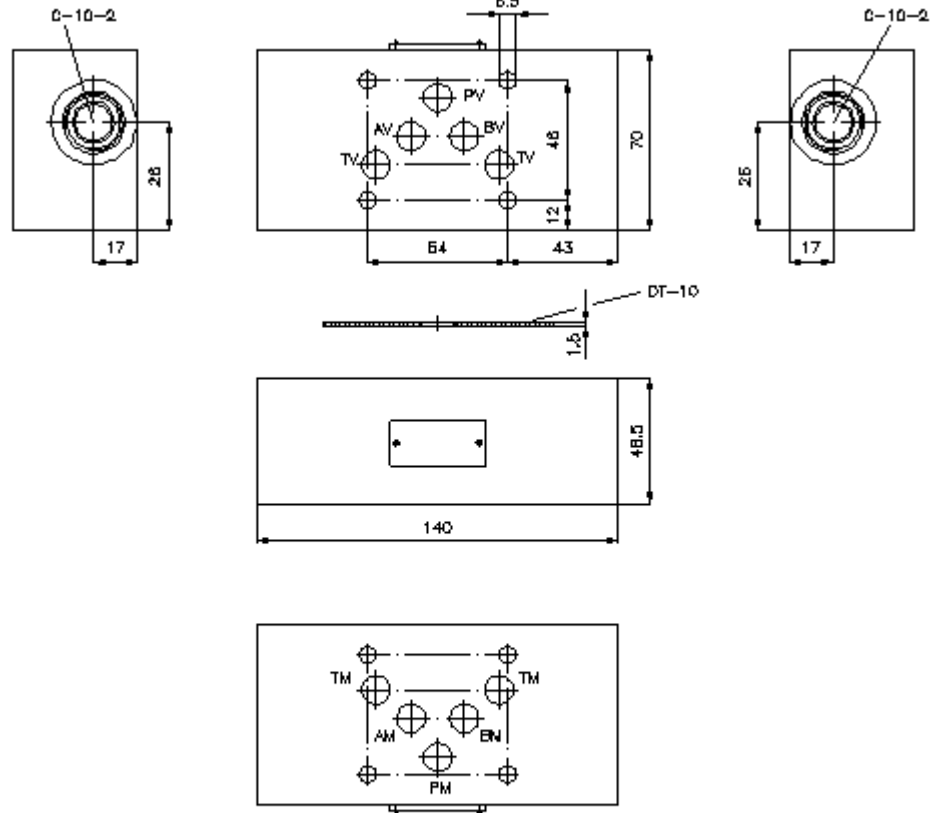
**multiple valve body, CETOP 5
from T to T (2x)
MGZ-10.-TT/10+TT/10-05**



IMAV-Hydraulik GmbH
Breite Strasse 10
40670 Meerbusch - Germany
fon +49 (0)2159 - 9188.0
fax +49 (0)2159 - 4242
e-mail: info@imav.com
internet: <http://www.imav.com>

IZ-940-301-00

(Subject to change!)



**multiple valve body, CETOP 5
from T to T (2x)
MGZ-10.-TT/10+TT/10-05**



IMAV-Hydraulik GmbH
Breite Strasse 10
40670 Meerbusch - Germany
fon +49 (0)2159 - 9188.0
fax +49 (0)2159 - 4242
e-mail: info@imav.com
internet: <http://www.imav.com>

IZ-940-301-00

(Subject to change!)

Ordering example:

MGZ - 10A - TT / 10 + TT / 10 - 05
| | | | | | |
A **B** **C** **D** **E** **F** **G**

Model code:

- A design**
multipurpose valve body
with mounting interface DIN 24340 form A
sandwichplate design
- B size and material**
10A = aluminum (F37)
10S = steel (9SMnPb28K resp. GGG-40)

- C function mode**
TT = for one screw-in valve in T
- D size of cavity**
size 10
- E function mode**
TT = for one screw-in valve in T
- F size of cavity**
size 10
- G height**
05 = 50 mm

Technical Data:

- note:** Concerning the flow direction it is important to review the mounting position (port "1" and "2"). Rotating around the lateral axis of the variant TT+TT and AA+BB the flow direction of the multipurpose valve body CETOP 5 will change from 1 to 2 and from 2 to 1 (see symbol).
- nominal pressure:** 350 bar (S)
250 bar (A)
- weight:** 1.2 / 3.4 kg (A/S)
- cavity:** C-10-2 see datasheet no. [IK-100-109-00](#)
- included:** DT-10 = sealing plate with vulcanized O-ring (Viton FPM)