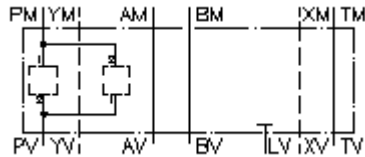


**multiple valve body, CETOP 7
from PM1 to PV2 and PM2 to PV1
MGZ-16.-PM1PV2/10+PM2PV1/12-09**



Symbol:

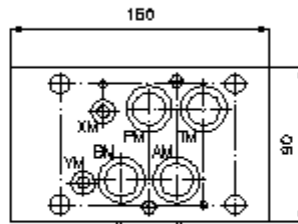
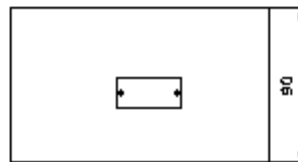
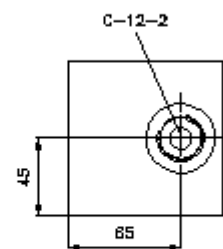
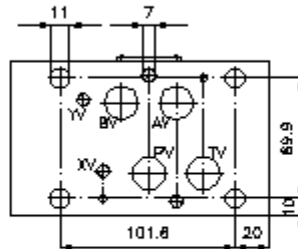
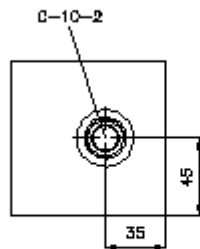
Nom. pressure:
350 bar



IMAV-Hydraulik GmbH
Breite Strasse 10
D-40670 Meerbusch (Osterath)
Phone +49 (0)2159 - 9188.0
Fax +49 (0)2159 - 4242
E-mail: info@imav.com
Internet: <http://www.imav.com>

IZ-950-350-00

(Subject to change!)



**multiple valve body, CETOP 7
from PM1 to PV2 and PM2 to PV1
MGZ-16.-PM1PV2/10+PM2PV1/12-09**



IMAV-Hydraulik GmbH
Breite Strasse 10
D-40670 Meerbusch (Osterath)
Phone +49 (0)2159 - 9188.0
Fax +49 (0)2159 - 4242
E-mail: info@imav.com
Internet: <http://www.imav.com>

IZ-950-350-00

(Subject to change!)

Ordering example:

MGZ - 16A - PM1PV2 / 10 + PM2PV1 / 12 - 09
| | | | | | |
A **B** **C** **D** **E** **F** **G**

Model code:

- | | |
|--|---|
| <p>A design
multipurpose valve body
with mounting interface DIN 24340 form A
sandwichplate design</p> <p>B size and material
16A = aluminum (F37)
16S = steel (9SMnPb28K resp. GGG-40)</p> | <p>C function mode
PM1/PV2 = for one screw-in valve in P</p> <p>D size of cavity
size 10</p> <p>E function mode
PM2/PV1 = for one screw-in valve in P</p> <p>F size of cavity
size 12</p> <p>G height
09 = 90 mm</p> |
|--|---|

Technical Data:

nominal pressure: 350 bar (S)
250 bar (A)

weight: 3.1 / 8.6 kg (A/S)

cavity: C-12-2 see datasheet no. [IK-100-129-00](#)

cavity: C-10-2 see datasheet no. [IK-100-109-00](#)

included: 4 pcs. O-ring 22.22 x 2.62
2 pcs. O-ring 9.19 x 2.62