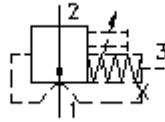


**2 way, 2 pos. logic spool valve  
type "R"**  
DPS2-10.-R.-0-...-..

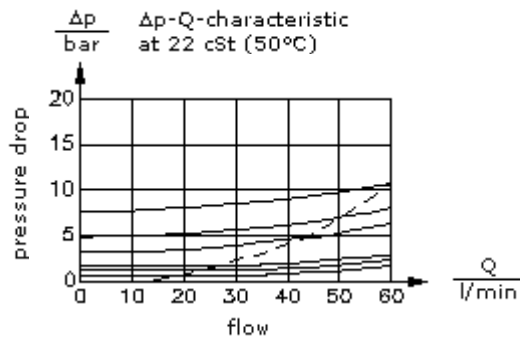
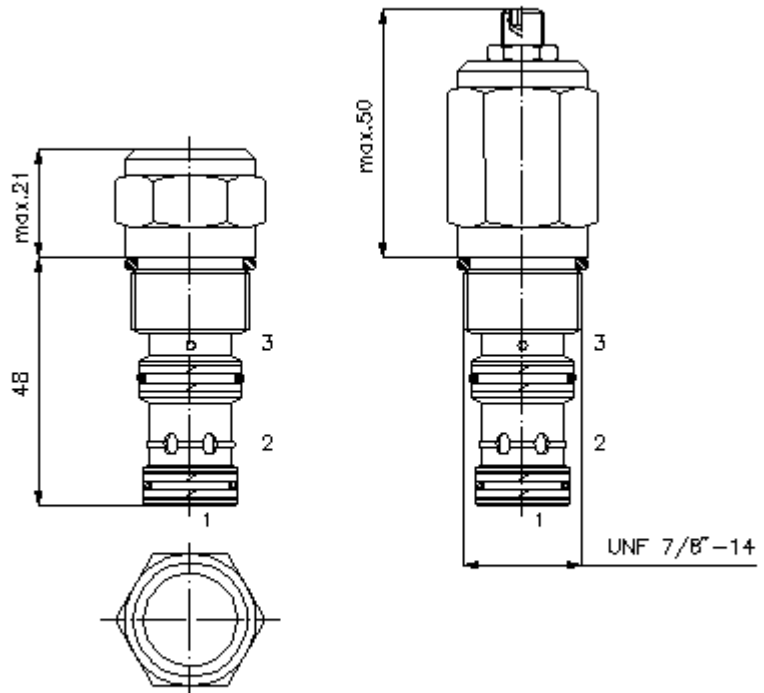


IMAV-Hydraulik GmbH  
Breite Strasse 10  
40670 Meerbusch - Germany  
fon +49 (0)2159 - 9188.0  
fax +49 (0)2159 - 4242  
e-mail: [info@imav.com](mailto:info@imav.com)  
internet: <http://www.imav.com>

**MD-750-103-00**  
(Subject to change!)

HEX 1"  
(torque  
cartridge:  
48 - 54 Nm)

cavity:  
C-10-3S  
see  
data-sheet no.:  
[IK-200-109-00](#)



## 2 way, 2 pos. logic spool valve type "R"

DPS2-10.-R-.-0-...-

### Ordering example:

DPS2 - 10N - R - F - 0 - 040 - AA

|   |   |   |   |   |   |   |
|---|---|---|---|---|---|---|
|   |   |   |   |   |   |   |
| A | B | C | D | E | F | G |



IMAV-Hydraulik GmbH  
Breite Strasse 10  
40670 Meerbusch - Germany  
fon +49 (0)2159 - 9188.0  
fax +49 (0)2159 - 4242  
e-mail: [info@imav.com](mailto:info@imav.com)  
internet: <http://www.imav.com>

**MD-750-103-00**

(Subject to change!)

### Model code:

- |   |   |
|---|---|
| <p><b>A</b> design<br/>logic valve</p> <p><b>B</b> size and sealing<br/>10N = Buna (NBR)<br/>10V = Viton (FPM)</p> <p><b>C</b> spool type<br/>R = pressure reducing<br/>base position open</p> <p><b>D</b> adjustment<br/>F = fixed</p> <p><b>E</b> construction<br/>0 = screw-in valve</p> <p><b>F</b> crack pressure<br/>005 = 0.3 bar<br/>010 = 0.7 bar<br/>020 = 1.4 bar<br/>040 = 2.8 bar<br/>080 = 5.5 bar<br/>160 = 11.0 bar</p> | <p><b>G</b> function mode<br/>00 = 210 bar variant<br/>AA = 350 bar variant</p> |
|---|---|

### Technical Data:

|                           |  |
|---------------------------|--|
| <b>nominal pressure:</b>  | 290 bar  |
| <b>nominal flow:</b>      | 60 l/min   |
| <b>weight:</b>            | 0.14 kg  |
| <b>temperature range:</b> | -40°C to 120°C   |
| <b>fluids:</b>            | hydraulic oil as per DIN 51524 T1 (ISO TC 131)                       |
| <b>max. leakage:</b>      | 85 ccm/min at 22 cSt (50°C) and 350 bar                              |
| <b>seals:</b>             | optional Buna (NBR) or Viton (FPM), as well as Teflon wascher (PTFE) |
| <b>pilot ratio:</b>       | 1 : 1  |
| <b>cavity:</b>            | C-10-3S see datasheet no. <a href="#">IK-200-109-00</a>              |
| <b>housing:</b>           | 3SLH-10.-B.. see datasheet no. <a href="#">IH-200-000-00</a>         |
| <b>seal kit:</b>          | SP-MDS-10N-34S (NBR), SP-MDS-10V-34S (FPM)                           |