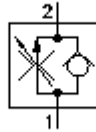


2 way flow reg. screw-in valve (adjustable) FAR1-12.-C-0

FIT-N Symbol:
Hydraulics

Nom. pressure:
350 bar

Nominal flow:
95 l/min.



IMAV-Hydraulik GmbH
Breite Strasse 10
D-40670 Meerbusch (Osterath)
Phone +49 (0)2159 - 9188.0
Fax +49 (0)2159 - 4242
E-mail: info@imav.com
Internet: <http://www.imav.com>

MF-200-121-00
(Subject to change!)

HEX 1/8"

∅38.5

HEX 3/4"

max.75

HEX 1 1/4"
(torque
cartridge:
85 - 94 Nm)

45

cavity:
C-12-2
see
data-sheet no.:
[IK-100-129-00](#)

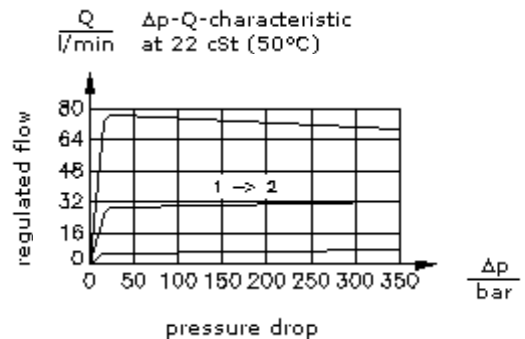
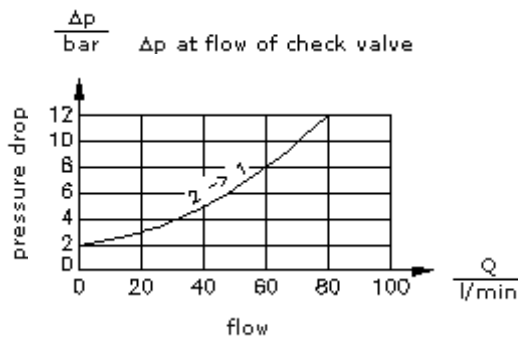
2

2

1

1

UNF 7/8"-14



**2 way flow reg. screw-in valve
(adjustable)
FAR1-12.-C-0**



IMAV-Hydraulik GmbH
Breite Strasse 10
D-40670 Meerbusch (Osterath)
Phone +49 (0)2159 - 9188.0
Fax +49 (0)2159 - 4242
E-mail: info@imav.com
Internet: <http://www.imav.com>

MF-200-121-00
(Subject to change!)

Ordering example:

FAR1 - 12N - S - 0
| | | |
A **B** **C** **D**

Model code:

- | | |
|----------------------------------------------------------------------------------------------------------------|---------------------------------------------|
| A design
flow regulator valve
pressure independend | D construction
0 = screw-in valve |
| B size and sealing
12N = Buna (NBR)
12V = Viton (FPM) | |
| C adjustment
S = screw adjustment
C = cap
K = handknob
H = calibrated handknob with locknut | |

Technical Data:

- | | |
|---------------------------------|-------------------------------------------------------------------------------------------|
| note: | left turn (counter clockwise) = increasing flow
right turn (clockwise) = reducing flow |
| nominal pressure: | 350 bar |
| nominal flow: | 95 l/min |
| weight: | 0.45 kg |
| inlet flow: | 95 l/min |
| leakage: | closed valve
0.4 l/min at 22 cSt (50°C) at 210 bar |
| temperature range: | -40°C to 120°C |
| fluids: | hydraulic oil as per DIN 51524 T1 (ISO TC 131) |
| check valve: | crack pressure = 1.7 bar |
| Δp pressure compensator: | 16 bar |
| regulation range: | 1.5 - 95 l/min |
| regulation accuracy: | 4.0 - 60 l/min ±, 10%, 60 - 90 l/min ± 15% |
| seals: | optional Buna (NBR) or Viton (FPM), as well as Teflon wascher (PTFE) |
| cavity: | C-12-2 see datasheet no. IK-100-129-00 |
| housing: | 2LH-12.-B.. see datasheet no. IH-100-000-00 |
| seal kit: | SP-MDS-12N-21(NBR), SP-MDS-12V-21 (FPM) |