

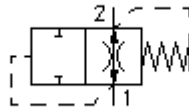
line break safty screw-in valve (fixed)

VF1-16.-F-0-.....

EATON Symbol:
Hydraulics

Nom. pressure:
210 bar

Nominal flow:
114 l/min.

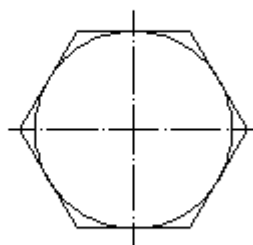
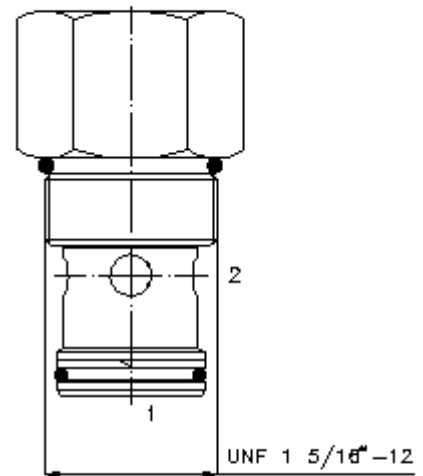
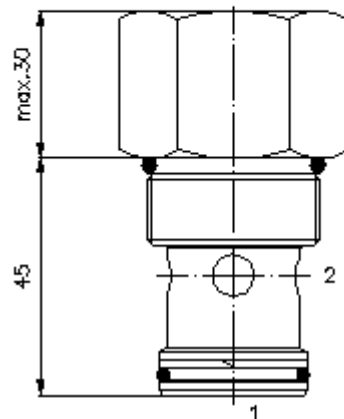


IMAV-Hydraulik GmbH
Breite Strasse 10
D-40670 Meerbusch (Osterath)
Phone +49 (0)2159 - 9188.0
Fax +49 (0)2159 - 4242
E-mail: info@imav.com
Internet: <http://www.imav.com>

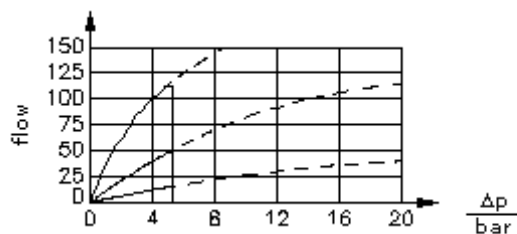
MF-710-160-00
(Subject to change!)

HEX 1 1/2"
(torque
cartridge:
109 - 122 Nm)

cavity:
C-16-2
see
data-sheet no.:
[IK-100-169-00](#)



$\frac{Q}{l/min}$ Δp -Q-characteristic
at 22 cSt (50°C)



-- 1>2

--- 2>1

line break safty screw-in valve (fixed)

VF1-16.-F-0-.....

Ordering example:

VF1 - 16N - F - 0 - 15.00
| | | | |
A **B** **C** **D** **E**



IMAV-Hydraulik GmbH
Breite Strasse 10
D-40670 Meerbusch (Osterath)
Phone +49 (0)2159 - 9188.0
Fax +49 (0)2159 - 4242
E-mail: info@imav.com
Internet: <http://www.imav.com>

MF-710-160-00

(Subject to change!)

Model code:

- | | |
|---|--|
| A design
velocity fuse | E quantity adjustment
requested regulated flow
Q specify in gpm
1 l/min = 0.265 Gpm
(1 Gpm = 3.785 l/min)
regulation tolerance
10.0 - 114.0 l/min ±20% |
| B size and sealing
16N = Buna (NBR)
16V = Viton (FPM) | |
| C adjustment
F = fixed | |
| D construction
0 = screw-in valve | |

Technical Data:

note:	The valve will shut of if the pre-setted flow exceed. It stays in this condition till the pressure goes below 5.5 bar.
nominal pressure:	210 bar
nominal flow:	114 l/min
weight:	0.33 kg
temperature range:	-40°C to 120°C
fluids:	hydraulic oil as per DIN 51524 T1 (ISO TC 131)
seals:	optional Buna (NBR) or Viton (FPM), as well as Teflon wascher (PTFE)
max. leakage:	2->1 = 5 drops/min at 22 cSt (50°C) and 210 bar
cavity:	C-16-2 see datasheet no. IK-100-169-00
housing:	2LH-16.-B.. see datasheet no. IH-100-000-00
seal kit:	SP-MDS-16N-21 (NBR), SP-MDS-16V-21 (FPM)