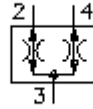


flow divider/combiner screw-in valve
FDC1-16.-0-..

FAT-N Symbol:
Hydraulics

Nom. pressure:
 210 bar

Nominal flow:
 178 l/min.

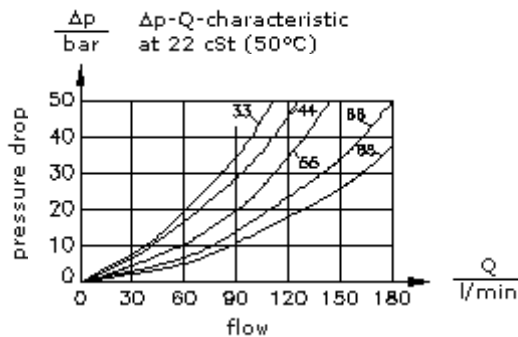
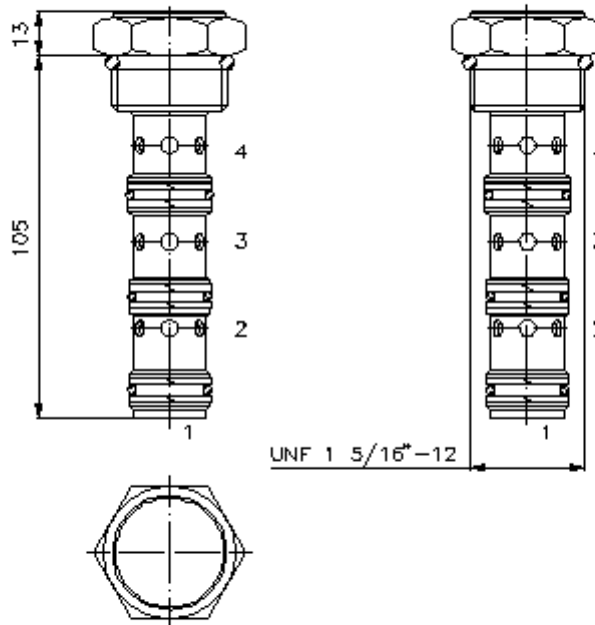


IMAV-Hydraulik GmbH
 Breite Strasse 10
 D-40670 Meerbusch (Osterath)
 Phone +49 (0)2159 - 9188.0
 Fax +49 (0)2159 - 4242
 E-mail: info@imav.com
 Internet: <http://www.imav.com>

MF-810-160-00
 (Subject to change!)

HEX 1 1/2"
 (torque
 cartridge:
 109 - 122 Nm)

cavity:
 C-16-4
 see
 data-sheet no.:
[IK-400-169-00](#)



flow divider/combiner screw-in valve
FDC1-16.-0-..



IMAV-Hydraulik GmbH
Breite Strasse 10
D-40670 Meerbusch (Osterath)
Phone +49 (0)2159 - 9188.0
Fax +49 (0)2159 - 4242
E-mail: info@imav.com
Internet: <http://www.imav.com>

Ordering example:

FDC1 - 16N - 0 - 55
| | | |
A **B** **C** **D**

MF-810-160-00
(Subject to change!)

Model code:

- A design**
flow divider/combiner
- B size and sealing**
16N = Buna (NBR)
16V = Viton (FPM)
- C construction**
0 = screw-in valve

- D flow and dividing ratio**
port
4 ; 4 ; Q max.
33 = 50.0% ; 50.0% ; 68 l/min
44 = 50.0% ; 50.0% ; 90 l/min
55 = 50.0% ; 50.0% ; 114 l/min
66 = 50.0% ; 50.0% ; 132 l/min
88 = 50.0% ; 50.0% ; 178 l/min
64 = 60.0% ; 40.0% ; 114 l/min
46 = 40.0% ; 60.0% ; 114 l/min
63 = 66.7% ; 33.3% ; 98 l/min
36 = 33.3% ; 66.7% ; 98 l/min
43 = 57.0% ; 43.0% ; 79 l/min
34 = 43.0% ; 57.0% ; 79 l/min

Technical Data:

- nominal pressure:** 210 bar
- nominal flow:** 178 l/min
- weight:** 0.35 kg
- temperature range:** -40°C to 120°C
- fluids:** hydraulic oil as per DIN 51524 T1 (ISO TC 131)
- seals:** optional Buna (NBR) or Viton (FPM), as well as Teflon wascher (PTFE)
- flow divisions (ratio):** ± 10% of nominal range
- cavity:** C-16-4 see datasheet no. [IK-400-169-00](#)
- housing:** 4LHS-16.-B.. see datasheet no. [IH-500-000-00](#)
- seal kit:** SP-MDS-16N-46 (NBR), SP-MDS-16V-46 (FPM)