

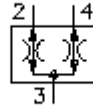
flow divider/combiner screw-in valve (with positive traction)
FDC3-10-0-..



FIT-N Symbol:
Hydraulics

Nom. pressure:
 210 bar

Nominal flow:
 61 l/min.

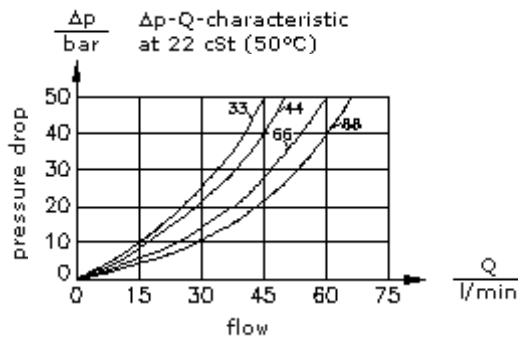
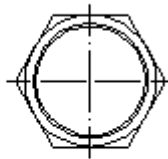
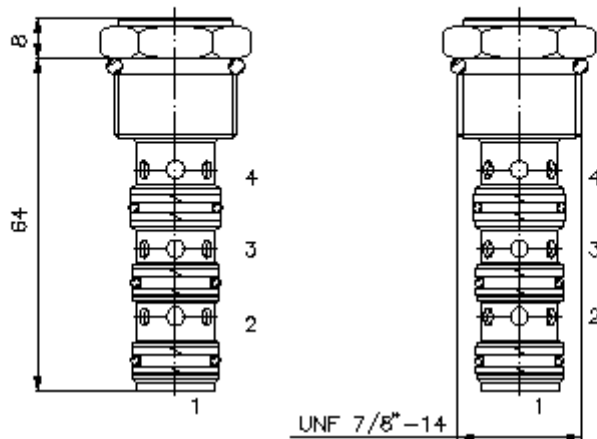


IMAV-Hydraulik GmbH
 Breite Strasse 10
 D-40670 Meerbusch (Osterath)
 Phone +49 (0)2159 - 9188.0
 Fax +49 (0)2159 - 4242
 E-mail: info@imav.com
 Internet: <http://www.imav.com>

MF-850-100-00
 (Subject to change!)

HEX 1"
 (torque
 cartridge:
 48 - 54 Nm)

cavity: C-10-4
 see
 data-sheet no.:
 IK-400-109-00



**flow divider/combiner screw-in
valve (with positive traction)
FDC3-10.-0-..**



IMAV-Hydraulik GmbH
Breite Strasse 10
D-40670 Meerbusch (Osterath)
Phone +49 (0)2159 - 9188.0
Fax +49 (0)2159 - 4242
E-mail: info@imav.com
Internet: <http://www.imav.com>

MF-850-100-00

(Subject to change!)

Ordering example:

FDC3 - 10N - 0 - 33
| | | |
A **B** **C** **D**

Model code:

- A design**
flow divider/combiner
- B size and sealing**
10N = Buna (NBR)
10V = Viton (FPM)
- C construction**
0 = screw-in valve

- D flow and dividing ratio**
port
4 ; 4 ; Q max.
33 = 50.0% ; 50.0% ; 23 l/min
44 = 50.0% ; 50.0% ; 30 l/min
66 = 50.0% ; 50.0% ; 45 l/min
88 = 50.0% ; 50.0% ; 61 l/min

Technical Data:

nominal pressure: 210 bar
nominal flow: 61 l/min
weight: 0.1 kg
temperature range: -40°C to 120°C
fluids: hydraulic oil as per DIN 51524 T1 (ISO TC 131)
seals: optional Buna (NBR) or Viton (FPM), as well as Teflon wascher (PTFE)
flow divisions (ratio): ± 10% of nominal range
cavity: C-10-4 see datasheet no. [IK-400-109-00](#) Review note!
housing: 4LHS-10.-B.. see datasheet no. [IH-500-000-00](#)
seal kit: SP-MDS-10N-46 (NBR), SP-MDS-10V-46 (FPM)