

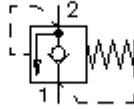
**check valve, screw-in type with  
with relief function (fixed)**  
RV4-10.-.-0-..

**Symbol:**



**Nom. pressure:**  
350 bar

**Nominal flow:**  
45 l/min.

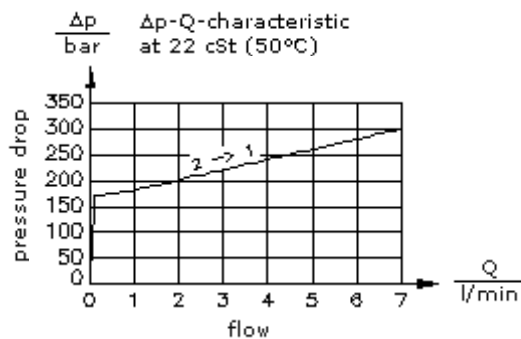
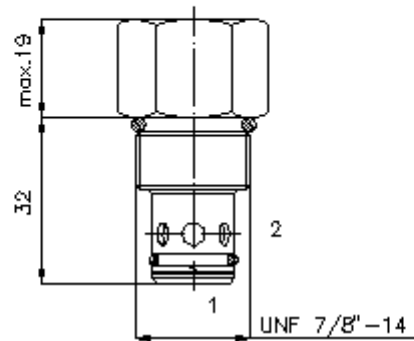


IMAV-Hydraulik GmbH  
Breite Strasse 10  
D-40670 Meerbusch (Osterath)  
Phone +49 (0)2159 - 9188.0  
Fax +49 (0)2159 - 4242  
E-mail: [info@imav.com](mailto:info@imav.com)  
Internet: <http://www.imav.com>

**MP-180-101-00**  
(Subject to change!)

HEX 1"  
(torque  
cartridge:  
48 - 54 Nm)

cavity:  
C-10-2  
see  
data-sheet no.:  
[IK-100-109-00](#)



**check valve, screw-in type with  
with relief function (fixed)**  
RV4-10.-.-0-..



IMAV-Hydraulik GmbH  
Breite Strasse 10  
D-40670 Meerbusch (Osterath)  
Phone +49 (0)2159 - 9188.0  
Fax +49 (0)2159 - 4242  
E-mail: [info@imav.com](mailto:info@imav.com)  
Internet: <http://www.imav.com>

**Ordering example:**

RV4 - 10N - C - 0 - 50 / 25  
|        |        |        |        |        |  
**A**    **B**    **C**    **D**    **E**    **F**

**MP-180-101-00**  
(Subject to change!)

**Model code:**

- |   |   |
|---|---|
| <p><b>A design</b><br/>check valve<br/>poppet type valve<br/>direct acting</p> <p><b>B size and sealing</b><br/>10N = Buna (NBR)<br/>10V = Viton (FPM)</p> <p><b>C adjustment</b><br/>F = fixed</p> | <p><b>D construction</b><br/>0 = screw-in valve</p> <p><b>E pressure range</b><br/>50 = 27.6 - 350 bar</p> <p><b>F requested factory settings in 50 PSI (3.45 bar) steps</b><br/>sample:<br/>10 = 70 bar (1000 PSI)<br/>25 = 175 - (2500 PSI)</p> |
|---|---|

**Technical Data:**

- |                                    |  |
|------------------------------------|--|
| <b>nominal pressure:</b>           | 350 bar  |
| <b>nominal flow:</b>               | RV = 45 l/min<br>DBV = 1 l/min                                       |
| <b>weight:</b>                     | 0.11 kg  |
| <b>temperature range:</b>          | -40°C to 120°C   |
| <b>fluids:</b>                     | hydraulic oil as per DIN 51524 T1 (ISO TC 131)                       |
| <b>max. leakage:</b>               | 5 drops/min at 22 cSt (50°C) and 80% crack pressure                  |
| <b>seals:</b>                      | optional Buna (NBR) or Viton (FPM), as well as Teflon wascher (PTFE) |
| <b>crack pressure check valve:</b> | 3 bar  |
| <b>cavity:</b>                     | C-10-2 see datasheet no. <a href="#">IK-100-109-00</a>               |
| <b>housing:</b>                    | 2LH-10.-B.. see datasheet no. <a href="#">IH-100-000-00</a>          |
| <b>seal kit:</b>                   | SP-MDS-10N-21 (NBR), SP-MDS-10V-21 (FPM)                             |