

**pilot unloading screw-in
-valve**
PUV3-10.-.-0-...-

Symbol:

Nom. pressure:
210 bar

Nominal flow:
4 l/min.



IMAV-Hydraulik GmbH
Breite Strasse 10
D-40670 Meerbusch (Osterath)
Phone +49 (0)2159 - 9188.0
Fax +49 (0)2159 - 4242
E-mail: info@imav.com
Internet: <http://www.imav.com>

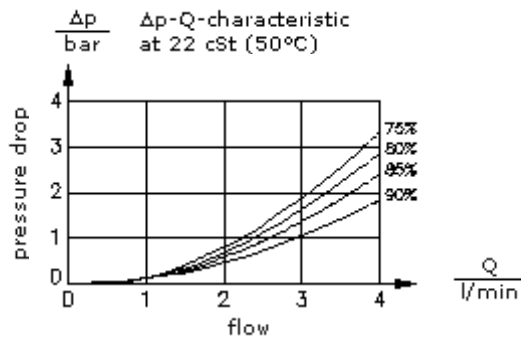
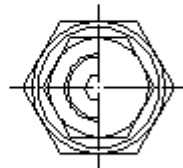
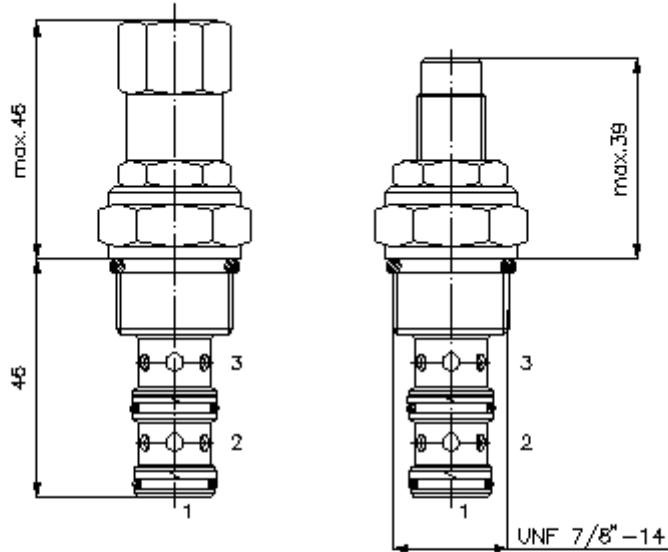
MP-810-100-00
(Subject to change!)

HEX 3/4"

HEX 1"
(torque
cartridge:
48 - 54 Nm)

cavity:
C-10-3
see
data-sheet no.:
[IK-300-109-00](#)

HEX 3/16"



**pilot unloading screw-in
-valve**
PUV3-10.-.-0-...-



IMAV-Hydraulik GmbH
Breite Strasse 10
D-40670 Meerbusch (Osterath)
Phone +49 (0)2159 - 9188.0
Fax +49 (0)2159 - 4242
E-mail: info@imav.com
Internet: <http://www.imav.com>

Ordering example:

PUV3 - 10N - C - 0 - 85 - 30
| | | | | |
A **B** **C** **D** **E** **F**

MP-810-100-00
(Subject to change!)

Model code:

- A design**
pilot operated pressure sequence valve
- B size and sealing**
10N = Buna (NBR)
10V = Viton (FPM)
- C adjustment**
S = screw adjustment
C = cap
- D construction**
0 = screw-in valve

- E switching pressure difference**
75 = 75%
80 = 80%
85 = 85%
90 = 90%
- F pressure range**
15 = 20.7 - 105 bar
30 = 103.4 - 210 bar

Technical Data:

- nominal pressure:** 210 bar
- nominal flow:** 4 l/min
- weight:** 0.15 kg
- temperature range:** -40°C to 120°C
- fluids:** hydraulic oil as per DIN 51524 T1 (ISO TC 131)
- seals:** optional Buna (NBR) or Viton (FPM), as well as Teflon wascher (PTFE)
- cavity:** C-10-3 see datasheet no. [IK-300-109-00](#)
- housing:** 3LH-10.-B.. see datasheet no. [IH-300-000-00](#)
- seal kit:** SP-MDS-10N-32 (NBR), SP-MDS-10V-32 (FPM)