

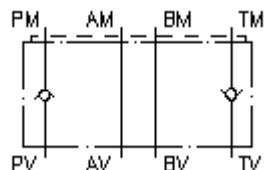
**nepovratni ventil-ploca CETOP 3
(sendvic ploca) u P+T
RZ-06S-P+T**



Simbol

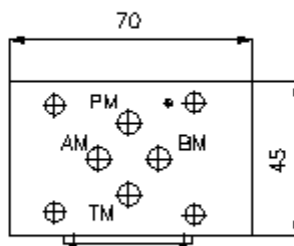
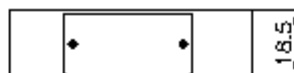
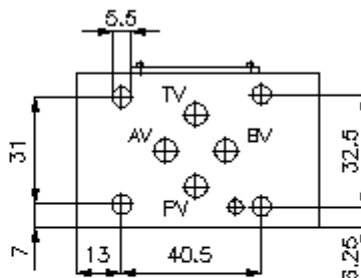
Nazivni pritisak
350 bar

Nazivni protok
30 l/min



IMAV-Hydraulik GmbH
Breite Strasse 10
D-40670 Meerbusch (Osterath)
Telefon +49 (0)2159 - 9188.0
Telefax +49 (0)2159 - 4242
E-mail: info@imav.com
Internet: <http://www.imav.com>

IZ-110-203-00
(Promjene nisu isključene!)



**nepovratni ventil-ploca CETOP 3
(sendvic ploca) u P+T
RZ-06S-P+T**



IMAV-Hydraulik GmbH
Breite Strasse 10
D-40670 Meerbusch (Osterath)
Telefon +49 (0)2159 - 9188.0
Telefax +49 (0)2159 - 4242
E-mail: info@imav.com
Internet: <http://www.imav.com>

IZ-110-203-00

(Promjene nisu isključene!)

Primjer za porudzbu

RZ - 06S - P+T
| | |
A **B** **C**

Kljuc

- | | |
|--|--|
| A izvedba
ploca za nepovratni ventil
sa semom po DIN 24340 forma A
izvedba senvic-ploca | B velicina i materijal
06S = celik (9SMnPb28K odnosno GGG-40) |
| | C konstrukcija/izvedba
P+T = nepovratni ventil u "T" kanalu |

Tehnicke informacije

nazivni pritisak:	350 bar
nazivni protok:	30 l/min
tezina:	0,5 kg
otvarajuci pritisak:	0.2 - 0.3 bar (standard), visi pritisci na pitanje
slobodan protok:	vidi simbol
ukljucujuci:	DT-06 = nosac zaptivaca sa intergiranim O-prstenima (Viton FPM)