

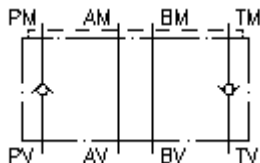
nepovratni ventil-ploca CETOP 5 (sendvic ploca) u P+T RZ-10S-P+T



Simbol

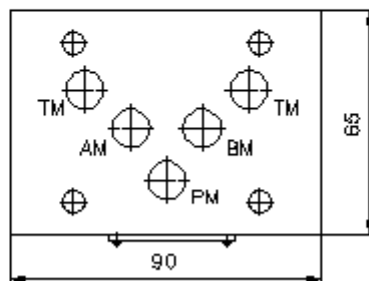
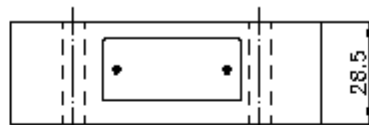
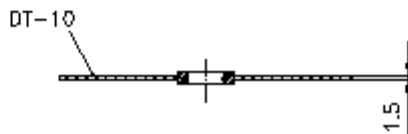
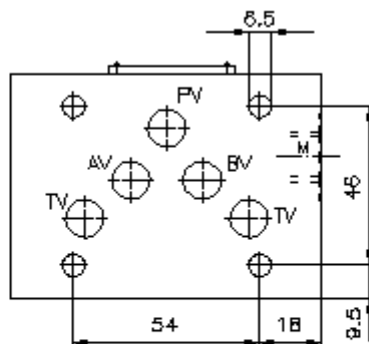
Nazivni pritisak
350 bar

Nazivni protok
50 l/min



IMAV-Hydraulik GmbH
Breite Strasse 10
D-40670 Meerbusch (Osterath)
Telefon +49 (0)2159 - 9188.0
Telefax +49 (0)2159 - 4242
E-mail: info@imav.com
Internet: <http://www.imav.com>

IZ-110-402-00
(Promjene nisu isključene!)



**nepovratni ventil-ploca CETOP 5
(sendvic ploca) u P+T
RZ-10S-P+T**



IMAV-Hydraulik GmbH
Breite Strasse 10
D-40670 Meerbusch (Osterath)
Telefon +49 (0)2159 - 9188.0
Telefax +49 (0)2159 - 4242
E-mail: info@imav.com
Internet: <http://www.imav.com>

IZ-110-402-00
(Promjene nisu isključene!)

Primjer za porudzbu

RZ - 10S - P+T
| | |
A **B** **C**

Kljuc

- | | |
|--|---|
| <p>A izvedba
ploca za nepovratni ventil
sa semom po DIN 24340 forma A
izvedba senvic-ploca</p> | <p>B velicina i materijal
10S = celik (9SMnPb28K odnosno GGG-40)</p> <p>C konstrukcija/izvedba
P+T = nepovratni ventil u "T" kanalu</p> |
|--|---|

Tehnicke informacije

nazivni pritisak:	350 bar
nazivni protok:	50 l/min
tezina:	1,1 kg
otvarajuci pritisak:	0,2 - 0,3 bar
slobodan protok:	vidi simbol
ukljucujuci:	DT-10 = nosac zaptivaca sa intergiranim O-prstenima (Viton FPM)