

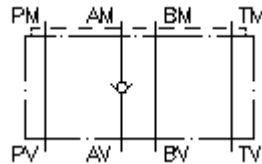
**nepovratni ventil-ploca CETOP 5  
(sendvic ploca) u A  
RZ-10S-A**



**Simbol**

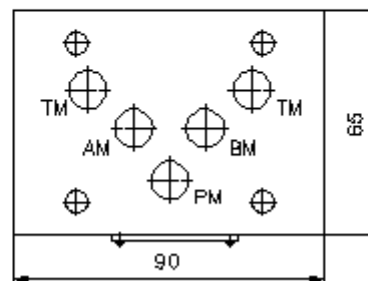
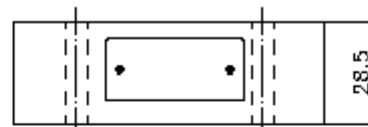
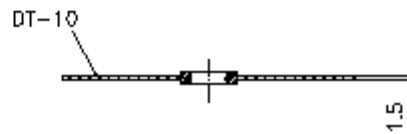
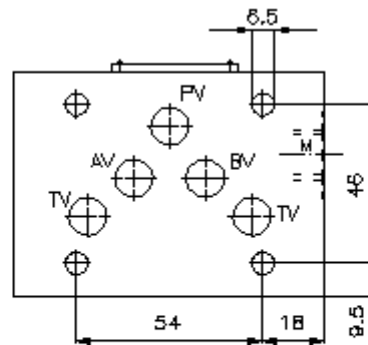
**Nazivni pritisak**  
350 bar

**Nazivni protok**  
50 l/min



IMAV-Hydraulik GmbH  
Breite Strasse 10  
D-40670 Meerbusch (Osterath)  
Telefon +49 (0)2159 - 9188.0  
Telefax +49 (0)2159 - 4242  
E-mail: [info@imav.com](mailto:info@imav.com)  
Internet: <http://www.imav.com>

**IZ-110-403-00**  
(Promjene nisu isključene!)



# nepovratni ventil-ploca CETOP 5 (sendvic ploca) u A RZ-10S-A



IMAV-Hydraulik GmbH  
Breite Strasse 10  
D-40670 Meerbusch (Osterath)  
Telefon +49 (0)2159 - 9188.0  
Telefax +49 (0)2159 - 4242  
E-mail: [info@imav.com](mailto:info@imav.com)  
Internet: <http://www.imav.com>

**IZ-110-403-00**  
(Promjene nisu isključene!)

## Primjer za porudzbu

RZ   - 10S - A  
|        |        |  
**A**    **B**    **C**

## Kljuc

- |  |  |
|--|--|
| <b>A</b> <b>izvedba</b><br>ploca za nepovratni ventil<br>sa semom po DIN 24340 forma A<br>izvedba senvic-ploca | <b>B</b> <b>velicina i materijal</b><br>10S = celik (9SMnPb28K odnosno GGG-40) |
|  | <b>C</b> <b>konstrukcija/izvedba</b><br>A = nepovratni ventil u A kanalu       |

## Tehnicke informacije

<b>nazivni pritisak:</b>	350 bar
<b>nazivni protok:</b>	50 l/min
<b>tezina:</b>	1,1 kg
<b>otvarajuci pritisak:</b>	0,2 - 0,3 bar
<b>slobodan protok:</b>	vidi simbol
<b>ukljucujuci:</b>	DT-10 = nosac zaptivaca sa intergiranim O-prstenima (Viton FPM)