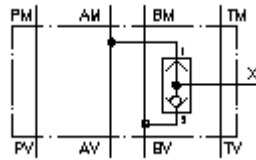


**prolazni ventil CETOP 3
(sendvic ploca) vanjski priklj. X
WRVZ-06.-CCB**



Simbol

Nazivni pritisak
350 bar

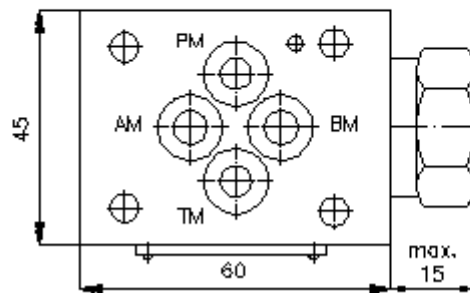
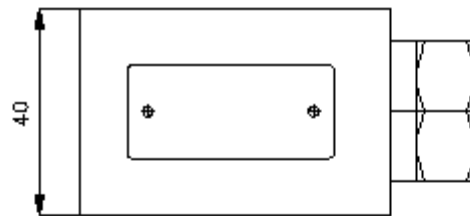
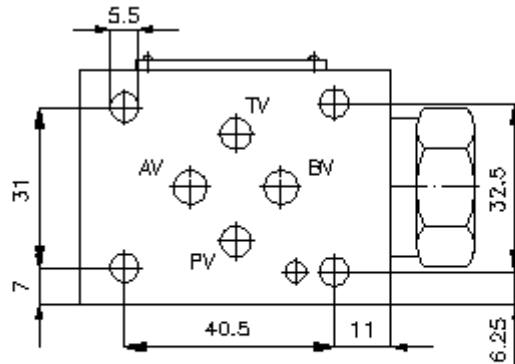
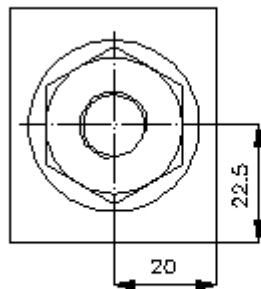


IMAV-Hydraulik GmbH
Breite Strasse 10
D-40670 Meerbusch (Osterath)
Telefon +49 (0)2159 - 9188.0
Telefax +49 (0)2159 - 4242
E-mail: info@imav.com
Internet: <http://www.imav.com>

IZ-160-250-00

(Promjene nisu isključene!)

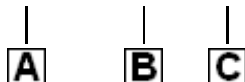
priključak
"X"
R 1/4"



**prolazni ventil CETOP 3
(sendvic ploca) vanjski priklj. X
WRVZ-06.-CCB**

Primjer za porudzbu

WRVZ - 06S - CCB



IMAV-Hydraulik GmbH
Breite Strasse 10
D-40670 Meerbusch (Osterath)
Telefon +49 (0)2159 - 9188.0
Telefax +49 (0)2159 - 4242
E-mail: info@imav.com
Internet: <http://www.imav.com>

IZ-160-250-00

(Promjene nisu isključene!)

Kljuc

A **izvedba**
ploca za promjenjivi nepovratni ventil
sa semom po DIN 24340 forma A
izvedba senvic-ploca

B **velicina i materijal**
06A = aluminum (F37)
06S = celik (9SMnPb28K odnosno GGG-40)

C **izvedba**
CCB = prolazni nepovratni ventil BDSV-
10.-2-..

Tehnicke informacije

nazivni pritisak: 250 bar (A)
350 bar (S)

tezina: 0,5 / 1, 1 kg (A/S)

**promjenjivi
nepovratni ventil:** BDSV-10.-2-.. vidi stranicu broj: CC-310-101-00

opcija: ukljucujuci:
4 kom. O-prstena 9.25 x 1.78