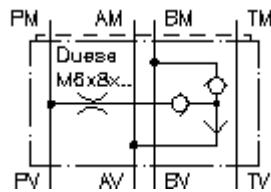


**prolazni ventil CETOP 3
(sendvic ploca) od A+B inter.do P
WRVDZ-06.-...**



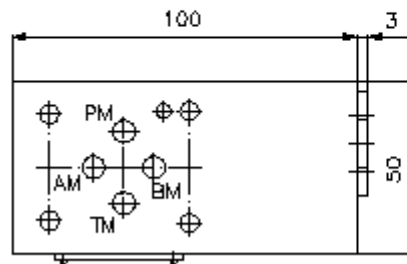
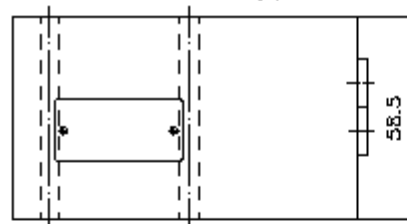
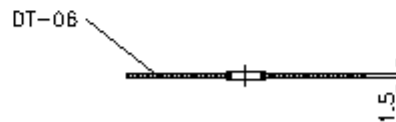
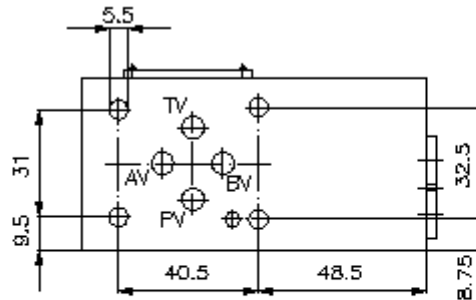
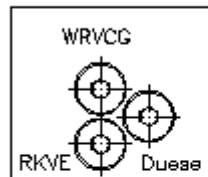
Simbol

Nazivni pritisak
350 bar



IMAV-Hydraulik GmbH
Breite Strasse 10
D-40670 Meerbusch (Osterath)
Telefon +49 (0)2159 - 9188.0
Telefax +49 (0)2159 - 4242
E-mail: info@imav.com
Internet: <http://www.imav.com>

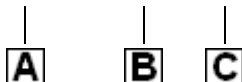
IZ-180-200-00
(Promjene nisu iskljucene!)



**prolazni ventil CETOP 3
(sendvic ploca) od A+B inter.do P
WRVDZ-06.-...**

Primjer za porudzbu

WRVDZ - 06A - 0.6



IMAV-Hydraulik GmbH
Breite Strasse 10
D-40670 Meerbusch (Osterath)
Telefon +49 (0)2159 - 9188.0
Telefax +49 (0)2159 - 4242
E-mail: info@imav.com
Internet: <http://www.imav.com>

IZ-180-200-00

(Promjene nisu isključene!)

Kljuc

A **izvedba**
promjenjivi nepovratni ventil
sa semom po DIN 24340 forma A
izvedba senvic-ploca

B **velicina i materijal**
06A = aluminum (F37)
06S = celik (9SMnPb28K odnosno GGG-40)

C **precnik blende**
0,4 - 2,0 mm

Tehnicke informacije

nazivni pritisak: 250 bar (A)
350 bar (S)

tezina: 0,8 / 2,3 kg (A/S)

promjenjivi nepovratni ventil: WRVCG-04 vidi stranicu broj: IC-310-000-00

nepovratni ventil za ugradnju: RKVE-04 vidi stranicu broj: IC-160-000-00

ukljucujuci: DT-06 = nosac zaptivaca sa intergiranim O-prstenima (Viton FPM)