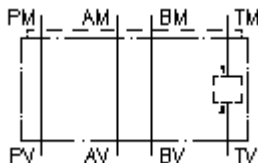


**kuciste, sendvic ploca, CETOP 3  
od TM1 prema TV2  
MGZ-06.-TM1/TV2/10-B-05**



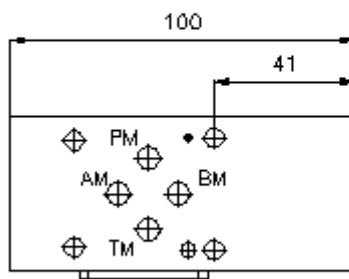
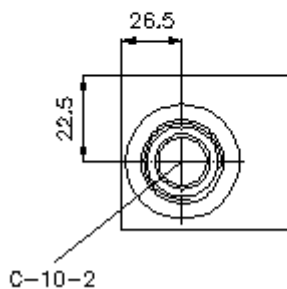
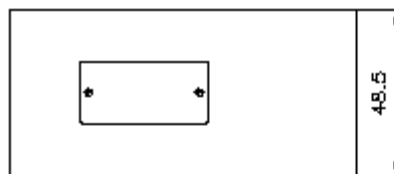
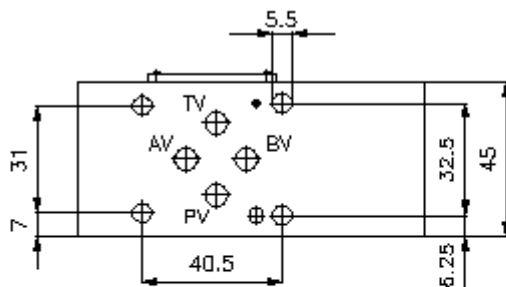
**Simbol**

**Nazivni pritisak**  
350 bar



IMAV-Hydraulik GmbH  
Breite Strasse 10  
D-40670 Meerbusch (Osterath)  
Telefon +49 (0)2159 - 9188.0  
Telefax +49 (0)2159 - 4242  
E-mail: [info@imav.com](mailto:info@imav.com)  
Internet: <http://www.imav.com>

**IZ-920-206-00**  
(Promjene nisu isključene!)



**kuciste, sendvic ploca, CETOP 3  
od TM1 prema TV2  
MGZ-06.-TM1/TV2/10-B-05**



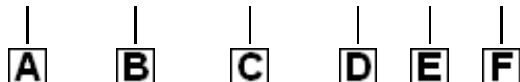
IMAV-Hydraulik GmbH  
Breite Strasse 10  
D-40670 Meerbusch (Osterath)  
Telefon +49 (0)2159 - 9188.0  
Telefax +49 (0)2159 - 4242  
E-mail: [info@imav.com](mailto:info@imav.com)  
Internet: <http://www.imav.com>

**IZ-920-206-00**

(Promjene nisu isključene!)

**Primjer za porudzbu**

MGZ - 06A - TM1/TV2 / 10 - B - 05



**Kljuc**

- |   |   |
|---|---|
| <b>A</b> <b>izvedba</b><br>visenamjensko kuciste<br>sa semom po DIN 24340 forma A<br>izvedba senvic-ploca | <b>C</b> <b>izvedba</b><br>TM1/TV2 = za jedan uvrtni ventil u T |
| <b>B</b> <b>velicina i materijal</b><br>065A = aluminij (F37)<br>065S = celik (9SMnPb28Kodnosno GGG-40)   | <b>D</b> <b>velicina uvrtnine</b><br>velicina 10, visina 50 mm  |
|   | <b>E</b> <b>izvedba</b><br>B = uvrtni ventil na B strani        |
|   | <b>F</b> <b>visina</b><br>05 = 50 mm                            |

**Tehnicke informacije**

- uputa:** Zbog pravca protoka vazno je obratiti paznju na polozej ploce (prikljucci "1" i "2"). Za izvedbe AA i BB se kroz okretanje visenamjenskog kucista CETOP 3 po duznoj osi mijenja pravac protoka npr. od 1 prema 2 i 2 prema 1 (vidi simbol).
- nazivni pritisak:** 350 bar (S)  
250 bar (A)
- tezina:** 0,6 / 1,5 kg (A/S)
- uvrtina:** C-10-2 vidi stranicu broj: IK-100-109-00
- ukljucujuci:** DT-06 = nosac zaptivaca sa intergiranim O-prstenima (Viton FPM)